

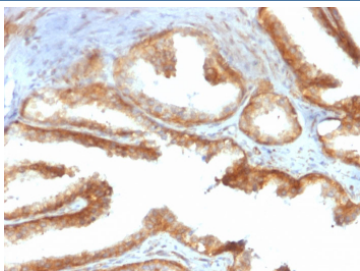
Recombinant YB-1 Antibody / Y-box-binding protein 1 [clone rYBX1/2430] (V7985)

Catalog No.	Formulation	Size
V7985-100UG	0.2 mg/ml in 1X PBS with 0.1 mg/ml BSA (US sourced) and 0.05% sodium azide	100 ug
V7985-20UG	0.2 mg/ml in 1X PBS with 0.1 mg/ml BSA (US sourced) and 0.05% sodium azide	20 ug
V7985SAF-100UG	1 mg/ml in 1X PBS; BSA free, sodium azide free	100 ug

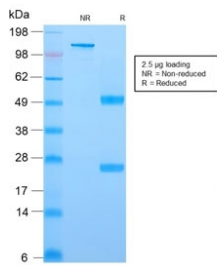
Recombinant **MOUSE MONOCLONAL**

[Bulk quote request](#)

Availability	1-3 business days
Species Reactivity	Human
Format	Purified
Host	Mouse
Clonality	Recombinant Mouse Monoclonal
Isotype	Mouse IgG1, kappa
Clone Name	rYBX1/2430
Purity	Protein G affinity chromatography
UniProt	P67809
Localization	Nuclear, cytoplasmic
Applications	Immunohistochemistry (FFPE) : 1-2ug/ml
Limitations	This recombinant YB-1 antibody is available for research use only.



IHC staining of FFPE human prostate carcinoma with recombinant YB-1 antibody (clone rYBX1/2430). HIER: boil tissue sections in pH 9 10mM Tris with 1mM EDTA for 20 min and allow to cool before testing.



SDS-PAGE analysis of purified, BSA-free recombinant YB-1 antibody (clone rYBX1/2430) as confirmation of integrity and purity.

Description

Y-box binding protein-1 (YBX1) is the prototypic member of the cold shock protein family that fulfills numerous cellular functions. In the nucleus, YBX1 protein orchestrates transcription of proliferation-related genes, whereas in the cytoplasm it associates with mRNA and directs translation. In human tumor entities, such as breast, lung and prostate cancer, cellular YBX1 expression indicates poor clinical outcome, suggesting that YBX1 is an attractive marker to predict patients' prognosis.

Application Notes

Optimal dilution of the recombinant YB-1 antibody should be determined by the researcher.

Immunogen

A recombinant human full-length YBX1 protein was used as the immunogen for this recombinant YB-1 antibody.

Storage

Store the recombinant YB-1 antibody at 2-8°C (with azide) or aliquot and store at -20°C or colder (without azide).