

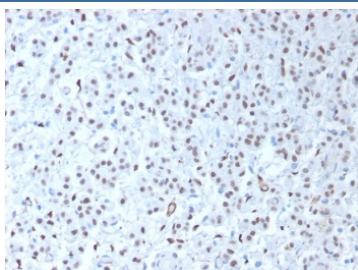
Recombinant WT1 Antibody / Rabbit Monoclonal [clone WT1/1434R] (V7263)

Catalog No.	Formulation	Size
V7263-100UG	0.2 mg/ml in 1X PBS with 0.1 mg/ml BSA (US sourced) and 0.05% sodium azide	100 ug
V7263-20UG	0.2 mg/ml in 1X PBS with 0.1 mg/ml BSA (US sourced) and 0.05% sodium azide	20 ug
V7263SAF-100UG	1 mg/ml in 1X PBS; BSA free, sodium azide free	100 ug
V7263IHC-7ML	Prediluted in 1X PBS with 0.1 mg/ml BSA (US sourced) and 0.05% sodium azide; *For IHC use only*	7 ml

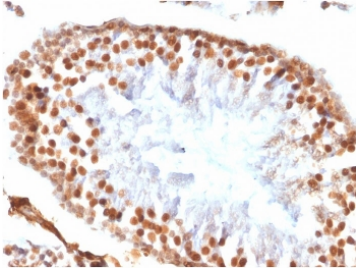
Recombinant **RABBIT MONOCLONAL**  Citations (1)

[Bulk quote request](#)

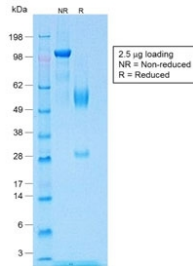
Availability	1-3 business days
Species Reactivity	Human, Rat
Format	Purified
Host	Rabbit
Clonality	Recombinant Rabbit Monoclonal
Isotype	Rabbit IgG, kappa
Clone Name	WT1/1434R
Purity	Protein A affinity chromatography
UniProt	P19544
Localization	Nuclear, cytoplasmic
Applications	Immunohistochemistry (FFPE) : 1-2ug/ml for 30 min at RT
Limitations	This recombinant WT1 antibody is available for research use only.



IHC testing of FFPE human mesothelioma tissue with recombinant WT1 antibody (clone WT1/1434R). HIER: steam sections in pH 9 10mM Tris with 1mM EDTA for 10-20 min.



IHC testing of FFPE rat testis tissue with recombinant WT1 antibody (clone WT1/1434R). HIER: steam sections in pH 9 10mM Tris with 1mM EDTA for 10-20 min.



SDS-PAGE analysis of purified, BSA-free recombinant WT1 antibody (clone WT1/1434R) as confirmation of integrity and purity.

Description

Wilms tumor is associated with mutations of WT1, a zinc-finger transcription factor that is essential for the development of the metanephric kidney and the urogenital system. The gene is normally expressed in fetal kidney and mesothelium, and its expression has been suggested as a marker for Wilms tumor and mesothelioma. WT1 protein has been identified in proliferative mesothelial cells, malignant mesothelioma, ovarian carcinoma, gonadoblastoma, nephroblastoma, and desmoplastic small round cell tumor. Lung adenocarcinomas rarely stain positive with this antibody. WT1 protein expression in mesothelial cells has become a reliable marker for the diagnosis of mesotheliomas.

Application Notes

Optimal dilution of the recombinant WT1 antibody should be determined by the researcher.

1. The prediluted format is supplied in a dropper bottle and is optimized for use in IHC. After epitope retrieval step (if required), drip mAb solution onto the tissue section and incubate at RT for 30 min.

Immunogen

A recombinant protein was used as the immunogen for the recombinant WT1 antibody.

Storage

Store the recombinant WT1 antibody at 2-8°C (with azide) or aliquot and store at -20°C or colder (without azide).

