

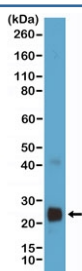
Recombinant VEGFA Antibody [clone RM391] (R20407)

Catalog No.	Formulation	Size
R20407-0.1ML	Antibody in PBS with 50% glycerol, 1% BSA and 0.09% sodium azide	100 ul

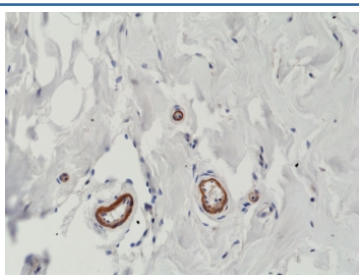
Recombinant **RABBIT MONOCLONAL**

[Bulk quote request](#)

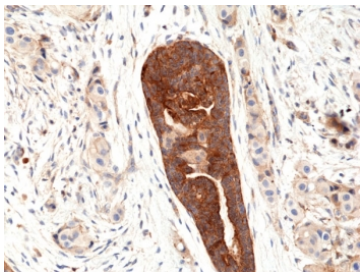
Availability	1-3 business days
Species Reactivity	Human
Format	Purified
Clonality	Recombinant Rabbit Monoclonal
Isotype	Rabbit IgG
Clone Name	RM391
Purity	Protein A purified from animal origin-free supernatant
UniProt	P15692
Localization	Cytoplasmic, cell surface and extracellular (secreted)
Applications	Immunohistochemistry (FFPE) : 1:100-1:200 Western Blot : 1:100-1:200
Limitations	This recombinant VEGFA antibody is available for research use only.



Western blot testing of VEGF protein-expressing human HEK293 cell lysate with recombinant VEGFA antibody.



IHC staining of FFPE human breast tissue with recombinant VEGFA antibody at 1:200.



IHC staining of FFPE human breast cancer tissue with recombinant VEGFA antibody at 1:100.

Description

This antibody reacts to human VEGF/VEGFA.

Application Notes

The stated application concentrations are suggested starting points. Titration of the recombinant VEGFA antibody may be required due to differences in protocols and secondary/substrate sensitivity.

Immunogen

A peptide corresponding to human VEGFA was used as the immunogen for the recombinant VEGFA antibody.

Storage

Store the recombinant VEGFA antibody at -20oC.