

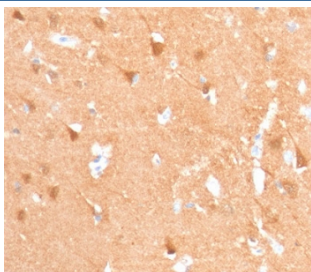
Recombinant UchL1 Antibody [clone rUBCE-L1] (V7624)

Catalog No.	Formulation	Size
V7624-100UG	0.2 mg/ml in 1X PBS with 0.1 mg/ml BSA (US sourced) and 0.05% sodium azide	100 ug
V7624-20UG	0.2 mg/ml in 1X PBS with 0.1 mg/ml BSA (US sourced) and 0.05% sodium azide	20 ug
V7624SAF-100UG	1 mg/ml in 1X PBS; BSA free, sodium azide free	100 ug
V7624IHC-7ML	Prediluted in 1X PBS with 0.1 mg/ml BSA (US sourced) and 0.05% sodium azide; *For IHC use only*	7 ml

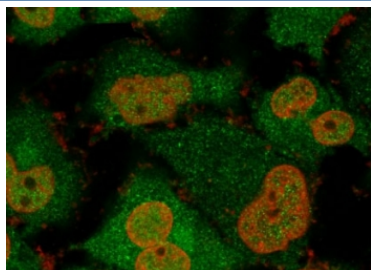
Recombinant **MOUSE MONOCLONAL**

[Bulk quote request](#)

Availability	1-3 business days
Species Reactivity	Human
Format	Purified
Host	Mouse
Clonality	Recombinant Mouse Monoclonal
Isotype	Mouse IgG1, kappa
Clone Name	rUBCE-L1
Purity	Protein G affinity chromatography
UniProt	P09936
Localization	Cytoplasmic, ER membrane
Applications	Western Blot : 1-2ug/ml Flow Cytometry : 1-2ug/10 ⁶ cells Immunofluorescence : 1-2ug/ml Immunohistochemistry (FFPE) : 1-2ug/ml for 30 min at RT (1)
Limitations	This recombinant UchL1 antibody is available for research use only.



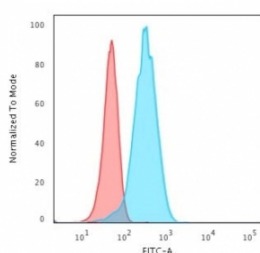
IHC staining of FFPE human cerebellum with recombinant UchL1 antibody (clone rUBCE-L1). Required HIER: boil tissue sections in pH 9 10mM Tris with 1mM EDTA for 10-20 min followed by cooling at RT for 20 min.



Immunofluorescent staining of permeabilized human T98G cells with recombinant UchL1 antibody cocktail (green, clone rUBCE-L1) and Nucspot (red).



Western blot testing of human brain lysate with recombinant UchL1 antibody (clone rUBCE-L1). Predicted molecular weight ~25 kDa.



Flow cytometry testing of permeabilized human T98G cells with recombinant UchL1 antibody (clone rUBCE-L1); Red=isotype control, Blue= recombinant PGP9.5 antibody.

Description

This mAb reacts with a protein of 20-30kDa, identified as PGP9.5, also known as ubiquitin carboxyl-terminal hydrolase-1 (UchL1). Initially, PGP9.5 expression in normal tissues was reported in neurons and neuroendocrine cells but later it was found in distal renal tubular epithelium, spermatogonia, Leydig cells, oocytes, melanocytes, prostatic secretory epithelium, ejaculatory duct cells, epididymis, mammary epithelial cells, Merkel cells, and dermal fibroblasts. Furthermore, immunostaining for PGP9.5 has been shown in a wide variety of mesenchymal neoplasms as well. A mutation in PGP9.5 gene is believed to cause a form of Parkinson's disease.

Application Notes

Optimal dilution of the recombinant UchL1 antibody should be determined by the researcher.

1. The prediluted format is supplied in a dropper bottle and is optimized for use in IHC. After epitope retrieval step (if required), drip mAb solution onto the tissue section and incubate at RT for 30 min.

Immunogen

Recombinant human protein was used as the immunogen for the recombinant UchL1 antibody.

Storage

Store the recombinant UchL1 antibody at 2-8oC (with azide) or aliquot and store at -20oC or colder (without azide).