

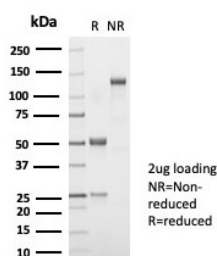
Recombinant TSH beta Antibody / TSHB [clone TSHb/7001R] (V9427)

Catalog No.	Formulation	Size
V9427-100UG	0.2 mg/ml in 1X PBS with 0.1 mg/ml BSA (US sourced), 0.05% sodium azide	100 ug
V9427-20UG	0.2 mg/ml in 1X PBS with 0.1 mg/ml BSA (US sourced), 0.05% sodium azide	20 ug
V9427SAF-100UG	1 mg/ml in 1X PBS; BSA free, sodium azide free	100 ug

Recombinant **RABBIT MONOCLONAL**

[Bulk quote request](#)

Availability	1-3 business days
Species Reactivity	Human
Format	Purified
Clonality	Recombinant Rabbit Monoclonal
Isotype	Rabbit IgG1, kappa
Clone Name	TSHb/7001R
Purity	Protein A/G affinity
UniProt	P01222
Localization	Cytoplasmic
Applications	Immunohistochemistry (FFPE) : 1-2ug/ml
Limitations	This recombinant TSH beta antibody is available for research use only.



SDS-PAGE analysis of purified, BSA-free recombinant TSH beta antibody (clone TSHb/7001R) as confirmation of integrity and purity.

Description

The four human glycoprotein hormones chorionic gonadotropin (CG), luteinizing hormone (LH), follicle stimulating hormone (FSH), and thyroid stimulating hormone (TSH) are dimers consisting of alpha and beta subunits that are associated non-covalently. The alpha subunits of these hormones are identical; however, their beta chains are unique and confer biological specificity. TSH is synthesized and secreted by thyrotrope cells in the anterior pituitary gland which

regulates the endocrine function of the thyroid gland. TSH stimulates the thyroid gland to secrete the hormones thyroxine (T4) and triiodothyronine (T3). TSH production is controlled by a Thyrotropin-Releasing Hormone (TRH), which is manufactured in the hypothalamus and transported to the pituitary gland, where it increases TSH production and release. Somatostatin is also produced by the hypothalamus and has an opposite effect on the pituitary production of TSH, decreasing or inhibiting its release. TSH is a useful marker in classification of pituitary tumors and the study of pituitary disease.

Application Notes

Optimal dilution of the recombinant TSH beta antibody should be determined by the researcher.

Immunogen

A recombinant human TSH beta protein fragment was used as the immunogen for the recombinant TSH beta antibody.

Storage

Aliquot the recombinant TSH beta antibody and store frozen at -20oC or colder. Avoid repeated freeze-thaw cycles.