

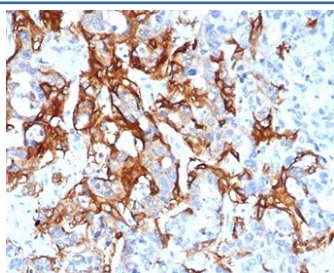
## Recombinant TROP2 Antibody / TACSTD2 [clone TACSTD2/6396R] (V9308)

Catalog No.	Formulation	Size
V9308-100UG	0.2 mg/ml in 1X PBS with 0.1 mg/ml BSA (US sourced), 0.05% sodium azide	100 ug
V9308-20UG	0.2 mg/ml in 1X PBS with 0.1 mg/ml BSA (US sourced), 0.05% sodium azide	20 ug
V9308SAF-100UG	1 mg/ml in 1X PBS; BSA free, sodium azide free	100 ug

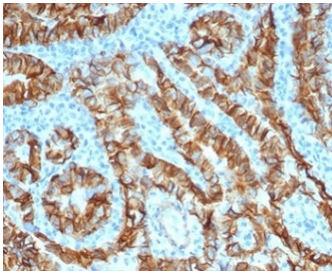
Recombinant **RABBIT MONOCLONAL**

[Bulk quote request](#)

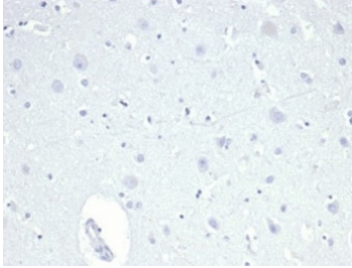
<b>Availability</b>	1-3 business days
<b>Species Reactivity</b>	Human
<b>Format</b>	Purified
<b>Clonality</b>	Recombinant Rabbit Monoclonal
<b>Isotype</b>	Rabbit IgG
<b>Clone Name</b>	TACSTD2/6396R
<b>Purity</b>	Protein A/G affinity
<b>UniProt</b>	P09758
<b>Localization</b>	Cell Surface
<b>Applications</b>	Western Blot : 1-2ug/ml Immunohistochemistry (FFPE) : 1-2ug/ml
<b>Limitations</b>	This recombinant TROP2 antibody is available for research use only.



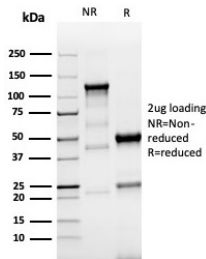
IHC staining of FFPE human colorectal liver metastasis with recombinant TROP2 antibody (clone TACSTD2/6396R). HIER: boil tissue sections in pH 9 10mM Tris with 1mM EDTA for 20 min and allow to cool before testing.



IHC staining of FFPE human thyroid carcinoma tissue with recombinant TROP2 antibody (clone TACSTD2/6396R). HIER: boil tissue sections in pH 9 10mM Tris with 1mM EDTA for 20 min and allow to cool before testing.



Negative control: IHC staining of FFPE human brain tissue using recombinant TROP2 antibody (clone TACSTD2/6396R) at 2ug/ml in PBS for 30min RT. HIER: boil tissue sections in pH 9 10mM Tris with 1mM EDTA for 20 min and allow to cool before testing.



SDS-PAGE analysis of purified, BSA-free recombinant TROP2 antibody (clone TACSTD2/6396R) as confirmation of integrity and purity.

## Description

TACSTD2 is a cell surface glycoprotein receptor. It is a single pass type I membrane protein containing one thyroglobulin type-1 domain, an epidermal growth factor-like repeat, a phosphatidylinositol binding site and tyrosine phosphorylation sites near the C-terminus. It plays a role in transducing intracellular calcium signals. It is expressed in trophoblast cells, cornea and multi-stratified epithelia. It is also highly expressed in several types of tumors and is involved in regulating the growth of carcinoma cells.

## Application Notes

Optimal dilution of the recombinant TROP2 antibody should be determined by the researcher.

## Immunogen

A portion of amino acids 31-274 was used as the immunogen for the recombinant TROP2 antibody.

## Storage

Aliquot the recombinant TROP2 antibody and store frozen at -20oC or colder. Avoid repeated freeze-thaw cycles.

