

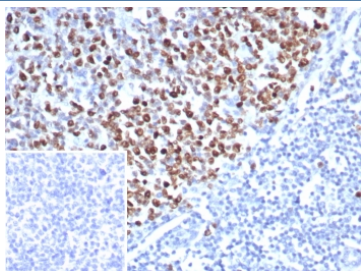
Recombinant TOP2A Antibody / Topoisomerase II alpha [clone rTOP2A/8339] (V4483)

Catalog No.	Formulation	Size
V4483-100UG	0.2 mg/ml in 1X PBS with 0.1 mg/ml BSA (US sourced), 0.05% sodium azide	100 ug
V4483-20UG	0.2 mg/ml in 1X PBS with 0.1 mg/ml BSA (US sourced), 0.05% sodium azide	20 ug
V4483SAF-100UG	1 mg/ml in 1X PBS; BSA free, sodium azide free	100 ug

Recombinant MOUSE MONOCLONAL

[Bulk quote request](#)

Availability	1-3 business days
Species Reactivity	Human
Format	Purified
Host	Mouse
Clonality	Recombinant Mouse Monoclonal
Isotype	Mouse IgG1, kappa
Clone Name	rTOP2A/8339
Purity	Protein A/G affinity
UniProt	P11388
Localization	Nucleus
Applications	Immunohistochemistry (FFPE) : 0.5-1ug/ml for 30 minutes at RT
Limitations	This recombinant TOP2A antibody is available for research use only.



IHC staining of FFPE human tonsil tissue with recombinant TOP2A antibody (clone rTOP2A/8339). Inset: PBS used in place of primary Ab (secondary Ab negative control).
HIER: boil tissue sections in pH 9 10mM Tris with 1mM EDTA for 20 min and allow to cool before testing.

Description

It recognizes a 170kDa protein, which is identified as topoisomerase IIAlpha. It shows no cross-reaction with

Topoisomerase II beta or I. Topo II Alpha plays important roles in synthesis and transcription of DNA as well as chromosomal segregation during mitosis. It is reported to be a sensitive and specific marker of late S-, G2- & M-phases in transformed and developmentally regulated normal cells. Topo II Alpha is also implicated in drug resistance of tumor cells and has been shown to be over-expressed in many human cancers. Decreased expression of Topo IIa is the predominant mechanism of resistance to several chemotherapeutic agents.

Application Notes

Optimal dilution of the recombinant TOP2A antibody should be determined by the researcher.

Immunogen

A recombinant human Topoisomerase II alpha protein fragment (aa1300-1500) was used as the immunogen for the recombinant TOP2A antibody.

Storage

Aliquot the recombinant TOP2A antibody and store frozen at -20oC or colder. Avoid repeated freeze-thaw cycles.