

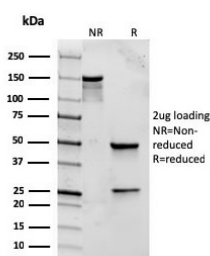
## Recombinant TLR2 Antibody [clone rTLR2/221] (V8392)

Catalog No.	Formulation	Size
V8392-100UG	0.2 mg/ml in 1X PBS with 0.1 mg/ml BSA (US sourced) and 0.05% sodium azide	100 ug
V8392-20UG	0.2 mg/ml in 1X PBS with 0.1 mg/ml BSA (US sourced) and 0.05% sodium azide	20 ug
V8392SAF-100UG	1 mg/ml in 1X PBS; BSA free, sodium azide free	100 ug

### Recombinant MOUSE MONOCLONAL

[Bulk quote request](#)

Availability	1-3 business days
Species Reactivity	Human
Format	Purified
Clonality	Recombinant Mouse Monoclonal
Isotype	Mouse IgG1, kappa
Clone Name	rTLR2/221
Purity	Protein G affinity chromatography
UniProt	O60603
Localization	Cell surface
Applications	ELISA : order Ab without BSA for coating
Limitations	This recombinant TLR2 antibody is available for research use only.



SDS-PAGE analysis of purified, BSA-free recombinant TLR2 antibody (clone rTLR2/221) as confirmation of integrity and purity.

## Description

This MAb reacts with human Toll-like receptor 2 (TLR2). It is a member of the Toll-like receptor (TLR) family, which plays a fundamental role in pathogen recognition and activation of innate immunity. TLRs are highly conserved from Drosophila

to humans and share structural and functional similarities. They recognize pathogen-associated molecular patterns (PAMPs) that are expressed on infectious agents, and mediate the production of cytokines necessary for the development of effective immunity. The various TLRs exhibit different patterns of expression. This gene is expressed most abundantly in peripheral blood leukocytes, and mediates host response to Gram-positive bacteria and yeast via stimulation of NF-kappaB.

## **Application Notes**

Optimal dilution of the recombinant TLR2 antibody should be determined by the researcher.

## **Immunogen**

Recombinant full-length human TLR2 protein was used as the immunogen for the recombinant TLR2 antibody.

## **Storage**

Store the recombinant TLR2 antibody at 2-8oC (with azide) or aliquot and store at -20oC or colder (without azide).