

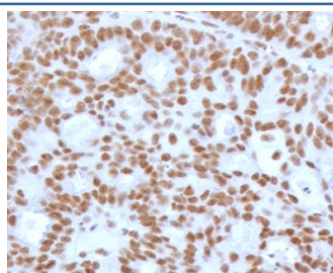
Recombinant TLE1 Antibody / Transducin-like enhancer protein 1 [clone TLEP1-2R] (V7462)

| Catalog No. | Formulation | Size |
|----------------|---|--------|
| V7462-100UG | 0.2 mg/ml in 1X PBS with 0.1 mg/ml BSA (US sourced) and 0.05% sodium azide | 100 ug |
| V7462-20UG | 0.2 mg/ml in 1X PBS with 0.1 mg/ml BSA (US sourced) and 0.05% sodium azide | 20 ug |
| V7462SAF-100UG | 1 mg/ml in 1X PBS; BSA free, sodium azide free | 100 ug |
| V7462IHC-7ML | Prediluted in 1X PBS with 0.1 mg/ml BSA (US sourced) and 0.05% sodium azide; *For IHC use only* | 7 ml |

Recombinant **RABBIT MONOCLONAL**

[Bulk quote request](#)

| | |
|--------------------|---|
| Availability | 1-3 business days |
| Species Reactivity | Human |
| Format | Purified |
| Clonality | Recombinant Rabbit Monoclonal |
| Isotype | Rabbit IgG, kappa |
| Clone Name | TLEP1-2R |
| Purity | Protein A affinity chromatography |
| UniProt | Q04724 |
| Localization | Nuclear |
| Applications | Immunohistochemistry (FFPE) : 1-2ug/ml for 30 min at RT Prediluted IHC Only Format : incubate for 30 min at RT (1) |
| Limitations | This recombinant TLE1 antibody is available for research use only. |



IHC testing of FFPE human endometrial carcinoma with recombinant TLE1 antibody (clone TLEP1-2R). Required HIER: boil tissue sections in pH 9 10mM Tris with 1mM EDTA for 10-20 min and allow to cool before testing.

Description

Transcriptional corepressor that binds to a number of transcription factors. Inhibits NF-kappa-B-regulated gene expression. Inhibits the transcriptional activation mediated by FOXA2, and by CTNNB1 and TCF family members in Wnt signaling. The effects of full-length TLE family members may be modulated by association with dominant-negative AES. Unusual function as coactivator for ESRRG. [UniProt]

Application Notes

The stated application concentrations are suggested starting points. Titration of the recombinant TLE1 antibody may be required due to differences in protocols and secondary/substrate sensitivity.

1. The prediluted format is supplied in a dropper bottle and is optimized for use in IHC. After epitope retrieval step (if required), drip mAb solution onto the tissue section and incubate at RT for 30 min.

Immunogen

A portion of amino acids 175-338 from the human protein was used as the immunogen for the recombinant TLE1 antibody.

Storage

Store the recombinant TLE1 antibody at 2-8oC (with azide) or aliquot and store at -20oC or colder (without azide).