

TL1A Antibody Recombinant Mouse MAb / TNFSF15 / VEGI [clone rVEGI/1283] (V3637)

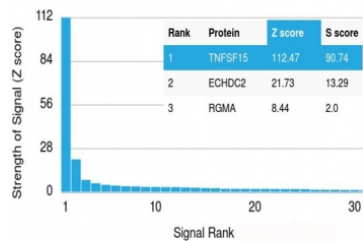
Catalog No.	Formulation	Size
V3637-100UG	0.2 mg/ml in 1X PBS with 0.1 mg/ml BSA (US sourced) and 0.05% sodium azide	100 ug
V3637-20UG	0.2 mg/ml in 1X PBS with 0.1 mg/ml BSA (US sourced) and 0.05% sodium azide	20 ug
V3637SAF-100UG	1 mg/ml in 1X PBS; BSA free, sodium azide free	100 ug
V3637IHC-7ML	Prediluted in 1X PBS with 0.1 mg/ml BSA (US sourced) and 0.05% sodium azide; *For IHC use only*	7 ml

Recombinant **MOUSE MONOCLONAL**

[Bulk quote request](#)

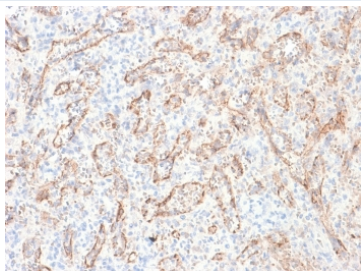
Species Reactivity	Human
Format	Purified
Host	Mouse
Clonality	Recombinant Mouse Monoclonal
Isotype	Mouse IgG1, kappa
Clone Name	rVEGI/1283
Purity	Protein G affinity chromatography
UniProt	O95150
Gene ID	9966
Localization	Cytoplasmic, cell surface, secreted
Applications	Immunohistochemistry (FFPE) : 1-2ug/ml for 30 min at RT
Limitations	This TL1A antibody is available for research use only.

Human Protein Microarray Specificity Validation

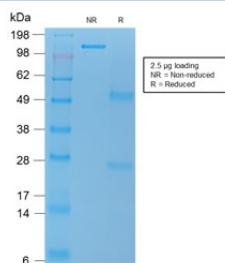


Analysis of HuProt(TM) microarray containing more than 19,000 full-length human proteins using recombinant TL1A antibody (clone rVEGI/1283). These results demonstrate the foremost specificity of the rVEGI/1283 mAb.

Z- and S- score: The Z-score represents the strength of a signal that an antibody (in combination with a fluorescently-tagged anti-IgG secondary Ab) produces when binding to a particular protein on the HuProt(TM) array. Z-scores are described in units of standard deviations (SD's) above the mean value of all signals generated on that array. If the targets on the HuProt(TM) are arranged in descending order of the Z-score, the S-score is the difference (also in units of SD's) between the Z-scores. The S-score therefore represents the relative target specificity of an Ab to its intended target.



Immunohistochemistry of TL1A antibody in human spleen tissue. FFPE human spleen shows membranous and cytoplasmic HRP-DAB brown staining predominantly within vascular endothelial structures and scattered stromal cells, consistent with VEGI / TNFSF15 localization in vascular and immune-associated compartments. Clone rVEGI/1283 was used as a recombinant mouse monoclonal antibody for detection. Heat-induced epitope retrieval was performed by boiling sections in 10 mM Tris with 1 mM EDTA, pH 9, for 10-20 minutes followed by cooling at room temperature for 20 minutes prior to staining.



SDS-PAGE analysis of purified, BSA-free TL1A antibody (clone rVEGI/1283) as confirmation of integrity and purity.

Description

TL1A antibody recognizes Tumor necrosis factor ligand superfamily member 15, also known as VEGI and encoded by the TNFSF15 gene. TL1A is a type II transmembrane cytokine that can be cleaved to generate a soluble form and is primarily expressed by endothelial cells, antigen-presenting cells, and activated immune cell populations. TL1A Antibody Recombinant Mouse MAb is developed to detect endogenous VEGI in research applications focused on inflammatory signaling and angiogenic regulation.

TL1A functions as a ligand for death receptor 3, also known as TNFRSF25, triggering downstream signaling pathways that regulate T cell activation, cytokine production, and apoptosis-related mechanisms. Through this receptor interaction, TNFSF15 plays a central role in modulating adaptive immune responses, particularly in T helper cell differentiation and effector function. In addition to its immune-regulatory activity, VEGI exerts anti-angiogenic effects by inhibiting endothelial cell proliferation and influencing vascular remodeling.

The TNFSF15 gene is located on chromosome 9q32 and produces a protein that participates in both membrane-bound and soluble signaling contexts. TL1A expression has been documented in vascular endothelium and inflamed tissues, and dysregulated TNFSF15 signaling has been associated with inflammatory bowel disease, autoimmune disorders, and tumor-associated vascular changes. In oncology research, VEGI has been investigated for its capacity to suppress tumor angiogenesis by limiting vascular support within the tumor microenvironment.

Because TL1A bridges vascular biology and immune activation, it remains an important target for studies examining endothelial-immune crosstalk and cytokine-driven inflammation. Altered expression of TNFSF15 may influence chronic inflammatory states and immune-mediated tissue injury.

Clone rVEGI/1283 is a recombinant mouse monoclonal antibody that recognizes TL1A and supports studies of TNFSF15-mediated signaling, immune regulation, and VEGI-associated angiogenic pathways.

Application Notes

Titration of the rTL1A antibody may be required for optimal performance.

1. The prediluted format is supplied in a dropper bottle and is optimized for use in IHC. After epitope retrieval step (if required), drip mAb solution onto the tissue section and incubate at RT for 30 min.

Immunogen

A full length human recombinant protein was used as the immunogen for this TL1A antibody.

Storage

Store the TL1A antibody at 2-8oC (with azide) or aliquot and store at -20oC or colder (without azide).

References (3)