

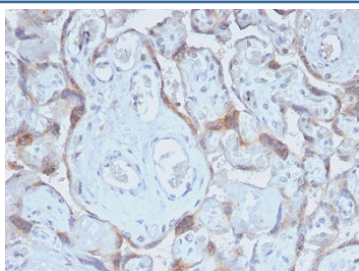
Recombinant TIMP2 Antibody [clone TIMP2/2488R] (V7356)

Catalog No.	Formulation	Size
V7356-100UG	0.2 mg/ml in 1X PBS with 0.1 mg/ml BSA (US sourced) and 0.05% sodium azide	100 ug
V7356-20UG	0.2 mg/ml in 1X PBS with 0.1 mg/ml BSA (US sourced) and 0.05% sodium azide	20 ug
V7356SAF-100UG	1 mg/ml in 1X PBS; BSA free, sodium azide free	100 ug
V7356IHC-7ML	Prediluted in 1X PBS with 0.1 mg/ml BSA (US sourced) and 0.05% sodium azide; *For IHC use only*	7 ml

Recombinant **RABBIT MONOCLONAL**

[Bulk quote request](#)

Availability	1-3 business days
Species Reactivity	Human
Format	Purified
Clonality	Recombinant Rabbit Monoclonal
Isotype	Rabbit IgG, kappa
Clone Name	TIMP2/2488R
Purity	Protein A affinity chromatography
UniProt	P16035
Localization	Cytoplasmic, cell surface, secreted
Applications	Immunohistochemistry (FFPE) : 1-2ug/ml for 30 min at RT
Limitations	This recombinant TIMP2 antibody is available for research use only.



IHC staining of FFPE human placenta with recombinant TIMP2 antibody (clone TIMP2/2488R). Required HIER: requires boil tissue sections in pH 9 10mM Tris with 1mM EDTA for 10-20 min and allow to cool before testing.

Description

It recognizes a protein of 21kDa, identified as tissue inhibitor of metalloproteinases 2 (TIMP2). It is closely related to TIMP1 and shows the highest binding affinity to both the latent (pro) and active forms of 72kDa Type IV collagenase (also known as MMP2 or gelatinase A). It also has affinity for the active form of 92kDa Type IV collagenase (also known as MMP9 or gelatinase B). TIMP2 inhibits the proteolytic invasiveness of tumor cells and normal placental trophoblast cells.

Application Notes

The concentration stated for each application is a general starting point. Variations in protocols, secondaries and substrates may require the recombinant TIMP2 antibody to be titrated up or down for optimal performance.

1. The prediluted format is supplied in a dropper bottle and is optimized for use in IHC. After epitope retrieval step (if required), drip mAb solution onto the tissue section and incubate at RT for 30 min.

Immunogen

Amino acids 56-66 (DSGNDIYGNPI) from the human protein were used as the immunogen for this recombinant TIMP2 antibody.

Storage

Store the recombinant TIMP2 antibody at 2-8°C (with azide) or aliquot and store at -20°C or colder (without azide).