

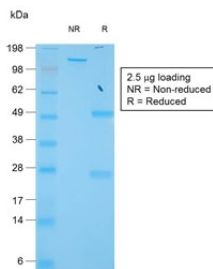
## Recombinant TIMP1 Antibody [clone TIMP1/1944R] (V3596)

Catalog No.	Formulation	Size
V3596-100UG	0.2 mg/ml in 1X PBS with 0.1 mg/ml BSA (US sourced) and 0.05% sodium azide	100 ug
V3596-20UG	0.2 mg/ml in 1X PBS with 0.1 mg/ml BSA (US sourced) and 0.05% sodium azide	20 ug
V3596SAF-100UG	1 mg/ml in 1X PBS; BSA free, sodium azide free	100 ug

Recombinant **RABBIT MONOCLONAL**

[Bulk quote request](#)

<b>Availability</b>	1-2 business days
<b>Species Reactivity</b>	Human
<b>Format</b>	Purified
<b>Host</b>	Rabbit
<b>Clonality</b>	Recombinant Rabbit Monoclonal
<b>Isotype</b>	Rabbit IgG, kappa
<b>Clone Name</b>	TIMP1/1944R
<b>Purity</b>	Protein A affinity chromatography
<b>UniProt</b>	P01033
<b>Localization</b>	Cytoplasmic, secreted
<b>Applications</b>	ELISA : 2-4ug/ml (order BSA/azide-free format)
<b>Limitations</b>	This recombinant TIMP1 antibody is available for research use only.



SDS-PAGE analysis of purified, BSA-free recombinant TIMP1 antibody (clone TIMP1/1944) as confirmation of integrity and purity.

## Description

TIMP1 is an inhibitory molecule that regulates matrix metalloproteinases (MMPs), and disintegrin-metalloproteinases (ADAMs and ADAMTSs). In regulating MMPs, TIMP1 plays a crucial role in extracellular matrix (ECM) composition, wound healing, and pregnancy.

The dysregulated activity of TIMP1 has been implicated in cancer. In pregnancy, TIMP1 plays a regulatory role in the process of implantation, particularly the cytotrophoblast invasion of the uterine endometrium. Additionally, it plays a role in regulating the transcriptional profile of fetal and placental tissues associated with the early stages of pregnancy. Studies attribute this role to a mechanism involving the chromatin structure at the TIMP1 promoter region, implicating new pharmaceutical possibilities for the therapeutic regulation of TIMP1. Accordingly, TIMP1 can be manipulated in vitro using techniques, like the TIMP1 knock-out. [Wiki]

## Application Notes

Optimal dilution of the recombinant TIMP1 antibody should be determined by the researcher.

1. The prediluted format is supplied in a dropper bottle and is optimized for use in IHC. After epitope retrieval step (if required), drip mAb solution onto the tissue section and incubate at RT for 30 min.

## Immunogen

Recombinant human protein was used as the immunogen for this recombinant TIMP1 antibody.

## Storage

Store the recombinant TIMP1 antibody at 2-8oC (with azide) or aliquot and store at -20oC or colder (without azide).