

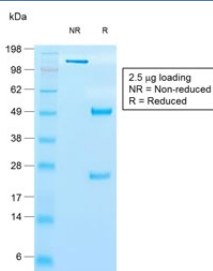
## Recombinant TIMP1 Antibody [clone rTIMP1/1710] (V3595)

Catalog No.	Formulation	Size
V3595-100UG	0.2 mg/ml in 1X PBS with 0.1 mg/ml BSA (US sourced) and 0.05% sodium azide	100 ug
V3595-20UG	0.2 mg/ml in 1X PBS with 0.1 mg/ml BSA (US sourced) and 0.05% sodium azide	20 ug
V3595SAF-100UG	1 mg/ml in 1X PBS; BSA free, sodium azide free	100 ug

Recombinant **MOUSE MONOCLONAL**

[Bulk quote request](#)

<b>Availability</b>	1-2 business days
<b>Species Reactivity</b>	Human
<b>Format</b>	Purified
<b>Host</b>	Mouse
<b>Clonality</b>	Recombinant Mouse Monoclonal
<b>Isotype</b>	Mouse IgG1
<b>Clone Name</b>	rTIMP1/1710
<b>Purity</b>	Protein G affinity chromatography
<b>UniProt</b>	P01033
<b>Localization</b>	Cytoplasmic, secreted
<b>Applications</b>	ELISA : 2-4ug/ml (order BSA/azide-free format)
<b>Limitations</b>	This recombinant TIMP1 antibody is available for research use only.



SDS-PAGE analysis of purified, BSA-free recombinant TIMP1 antibody (clone rTIMP1/1710) as confirmation of integrity and purity.

## Description

TIMP-1, TIMP-2, TIMP-3 and TIMP-4 (for tissue inhibitor of metalloproteinases -1, -2, -3 and -4) complex with metalloproteinases such as collagenases, gelatinases and stromelysins, resulting in irreversible inactivation of the metalloproteinase. TIMP-1 is identical to EPA (erythroid-potential activity). PTH has been shown to be a regulator of TIMP-2 in osteoblastic cells. TIMP-3 may be involved in regulating trophoblastic invasion of the uterus as well as in regulating remodeling of the extracellular matrix during the folding of epithelia, and in the formation, branching and expansion of epithelial tubes. TIMP-4 is most highly expressed in heart tissues. Studies have demonstrated that TIMP1 is useful as a biomarker for early detection of colorectal cancer, outperforming CEA. Additionally, TIMP1 studies have demonstrated its role in CRC tumorigenesis, as well as observing its overexpression in metastatic lymph nodes.

## Application Notes

The concentration stated for each application is a general starting point. Variations in protocols, secondaries and substrates may require the recombinant TIMP1 antibody to be titered up or down for optimal performance.

1. The prediluted format is supplied in a dropper bottle and is optimized for use in IHC. After epitope retrieval step (if required), drip mAb solution onto the tissue section and incubate at RT for 30 min.

## Immunogen

Recombinant human protein was used as the immunogen for this recombinant TIMP1 antibody.

## Storage

Store the recombinant TIMP1 antibody at 2-8°C (with azide) or aliquot and store at -20°C or colder (without azide).