

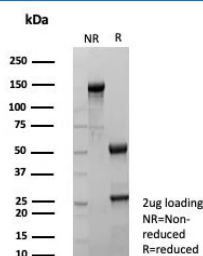
Recombinant TFF1 Antibody / Estrogen Inducible Protein pS2 [clone rTFF1/9134] (V5415)

| Catalog No. | Formulation | Size |
|----------------|---|--------|
| V5415-100UG | 0.2 mg/ml in 1X PBS with 0.1 mg/ml BSA (US sourced), 0.05% sodium azide | 100 ug |
| V5415-20UG | 0.2 mg/ml in 1X PBS with 0.1 mg/ml BSA (US sourced), 0.05% sodium azide | 20 ug |
| V5415SAF-100UG | 1 mg/ml in 1X PBS; BSA free, sodium azide free | 100 ug |

Recombinant MOUSE MONOCLONAL

[Bulk quote request](#)

| | |
|--------------------|--|
| Availability | 1-3 business days |
| Species Reactivity | Human |
| Format | Purified |
| Clonality | Recombinant Mouse Monoclonal |
| Isotype | Mouse IgG2b, kappa |
| Clone Name | rTFF1/9134 |
| Purity | Protein A/G affinity |
| UniProt | P04155 |
| Localization | Cytoplasm |
| Applications | Immunohistochemistry (FFPE) : 1-2ug/ml |
| Limitations | This recombinant TFF1 antibody is available for research use only. |



SDS-PAGE analysis of purified, BSA-free recombinant TFF1 antibody (clone rTFF1/9134) as confirmation of integrity and purity.

Description

It recognizes a polypeptide of 6.5kDa, identified as pS2 estrogen-regulated protein. Its epitope is located in the c-terminus of human pS2 protein. pS2 is a trefoil peptide. Trefoil peptides are protease resistant molecules secreted throughout the gut that play a role in mucosal healing. These peptides contain three intra-chain disulfide bonds, forming the trefoil motif,

or P-domain. pS2 is known to form dimers and this dimerization is thought to play a role in its protective and healing properties. About 60% of breast carcinomas are positive for pS2. Staining is cytoplasmic, often with localization to the Golgi apparatus. pS2 is shown to be localized in normal stomach mucosa, gastric fluid, goblet cells in the colon and small intestine, and in ulcerations of the gastrointestinal tract. Several studies have shown that pS2 is primarily expressed in estrogen receptor-positive breast tumors and it may define a subset of estrogen-dependent tumors that displays an increased likelihood of response to endocrine therapy.

Application Notes

Optimal dilution of the recombinant TFF1 antibody should be determined by the researcher.

Immunogen

A recombinant fragment (within amino acids 1-84) of human Estrogen Inducible Protein pS2 protein was used as the immunogen for the recombinant TFF1 antibody.

Storage

Aliquot the recombinant TFF1 antibody and store frozen at -20oC or colder. Avoid repeated freeze-thaw cycles.