

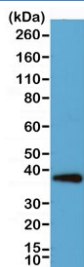
Synaptophysin Antibody for WB / SYP Western Blot Antibody [clone RM258] (R20280)

Catalog No.	Formulation	Size
R20280-0.1ML	Antibody in PBS with 50% glycerol, 1% BSA and 0.09% sodium azide	100 ul

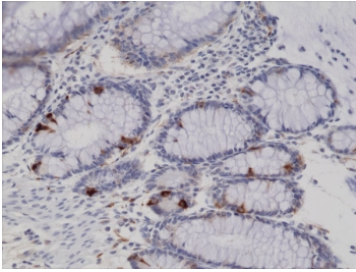
Recombinant **RABBIT MONOCLONAL**

[Bulk quote request](#)

Availability	1-3 business days
Species Reactivity	Human
Format	Purified
Host	Rabbit
Clonality	Recombinant Rabbit Monoclonal
Isotype	Rabbit IgG
Clone Name	RM258
Purity	Protein A purified from animal origin-free supernatant
UniProt	P08247
Gene ID	6855
Applications	Western Blot : 1:1000-1:2000 Immunohistochemistry (FFPE) : 1:200- 1:500 (1)
Limitations	This recombinant Synaptophysin antibody is available for research use only.



Synaptophysin Antibody for WB. Western blot analysis of human HeLa cell lysate using Synaptophysin Antibody for WB. Lane 1: human HeLa cell lysate. A band is detected at approximately 34-38 kDa, consistent with the predicted molecular weight of Synaptophysin / SYP. The recombinant rabbit monoclonal antibody clone RM258 produces a clear single band corresponding to the synaptic vesicle membrane protein Synaptophysin, supporting its suitability for western blot detection of SYP protein in cell lysates.



IHC testing of FFPE human colon tissue with recombinant Synaptophysin antibody.

Description

Synaptophysin (SYP) is a synaptic vesicle membrane glycoprotein widely expressed in neurons and neuroendocrine cells where it functions as a major structural component of synaptic vesicles involved in neurotransmitter storage and vesicle trafficking. Synaptophysin Antibody for WB / SYP Western Blot Antibody (clone RM258) is designed for western blot detection of Synaptophysin protein in cell and tissue lysates. Synaptophysin is one of the most widely used molecular markers of neuronal and neuroendocrine differentiation, and western blot analysis of SYP protein provides a reliable approach for confirming synaptic vesicle protein expression in neuronal tissues, neuroendocrine tumors, and experimental cell models.

Western blot analysis is a primary method used to detect Synaptophysin protein expression in lysates derived from cultured cells or tissues. In a typical western blot experiment, proteins are separated by SDS-PAGE, transferred to a membrane, and probed with antibodies that specifically recognize the target protein. Synaptophysin Antibody for WB enables clear detection of the SYP protein band following electrophoretic separation and membrane transfer. The Synaptophysin protein typically migrates near its predicted molecular weight of approximately 38 kDa on SDS-PAGE gels, producing a characteristic band that can be visualized during western blot detection. Because Synaptophysin is an integral membrane protein of synaptic vesicles, western blot analysis of SYP is commonly used to confirm synaptic vesicle protein expression in neuronal lysates and neuroendocrine cell lines.

Western blot detection of Synaptophysin is widely applied in neuroscience and cancer research to evaluate neuronal lineage markers, synaptic vesicle protein expression, and neuroendocrine differentiation. SYP protein is strongly expressed in neuronal tissues and neuroendocrine cells, making western blot analysis of Synaptophysin an important method for identifying neuronal or neuroendocrine characteristics in cultured cells and tumor samples. In many studies, western blot detection of Synaptophysin protein is used alongside other neuronal or neuroendocrine markers to confirm lineage identity or characterize differentiation states in experimental models. The ability to detect the Synaptophysin band by western blot therefore provides an important tool for investigating synaptic vesicle biology and neuronal protein expression.

This antibody clone RM258 is produced as a recombinant rabbit monoclonal antibody, a format that combines the high affinity binding properties typical of rabbit antibodies with the reproducibility of recombinant antibody production. Recombinant rabbit monoclonal antibodies are generated from defined antibody sequences expressed in controlled systems, enabling consistent performance and reliable target recognition across production batches. The recombinant rabbit monoclonal format supports reproducible western blot detection of Synaptophysin protein and helps ensure consistent band detection in repeated western blot experiments.

Because Synaptophysin is a well characterized synaptic vesicle protein and a widely used neuronal marker, detection of SYP protein by western blot remains a common strategy for confirming neuronal protein expression in biological samples. Synaptophysin Antibody for WB / SYP Western Blot Antibody (clone RM258) therefore provides a recombinant rabbit monoclonal antibody reagent optimized for western blot analysis of Synaptophysin protein, enabling reliable detection of SYP bands in neuronal and neuroendocrine lysates during western blot experiments.

Application Notes

The stated application concentrations are suggested starting points. Titration of the Synaptophysin Antibody for WB may

be required due to differences in protocols and secondary/substrate sensitivity.

1. A pH6 Citrate buffer or pH9 Tris/EDTA buffer HIER step is recommended for testing of FFPE tissue sections.

Immunogen

A peptide corresponding to the C-terminus of Synaptophysin was used as the immunogen for this Synaptophysin Antibody for WB.

Storage

Store the recombinant Synaptophysin antibody at -20oC (with glycerol) or aliquot and store at -20oC (without glycerol).

Alternate Names

SYP antibody, Synaptophysin antibody, Synaptic vesicle glycoprotein antibody, Major synaptic vesicle protein p38 antibody