

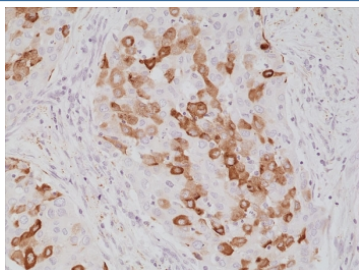
## Recombinant Surfactant protein A Antibody / SFTPA1 [clone RM334] (R20358)

Catalog No.	Formulation	Size
R20358-0.1ML	Antibody in PBS with 50% glycerol, 1% BSA and 0.09% sodium azide	100 ul

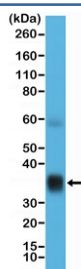
Recombinant **RABBIT MONOCLONAL**

[Bulk quote request](#)

Availability	1-3 business days
Species Reactivity	Human
Format	Purified
Clonality	Recombinant Rabbit Monoclonal
Isotype	Rabbit IgG
Clone Name	RM334
Purity	Protein A purified from animal origin-free supernatant
UniProt	Q8IWL1
Localization	Secreted, Cytoplasm
Applications	Immunohistochemistry (FFPE) : 1:500-1:1000 Western Blot : 1:1000-1:2000
Limitations	This recombinant Surfactant protein A antibody is available for research use only.



IHC staining of FFPE human lung cancer tissue with recombinant Surfactant protein A antibody at 1:1000.



Western blot testing of human lung tissue lysate with recombinant Surfactant protein A antibody at 1:10,000. Predicted molecular weight: ~26 kDa but may be observed at higher molecular weights due to glycosylation.

## Description

This antibody reacts to human Surfactant protein A (SP-A).

## Application Notes

The stated application concentrations are suggested starting points. Titration of the recombinant Surfactant protein A antibody may be required due to differences in protocols and secondary/substrate sensitivity.

## Immunogen

A peptide corresponding to the C-terminus of human Surfactant protein A (SP-A) was used as the immunogen for the recombinant Surfactant protein A antibody.

## Storage

Store the recombinant Surfactant protein A antibody at -20oC.