

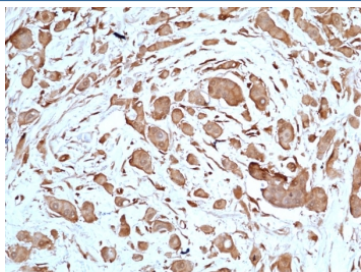
Recombinant STAT3 Antibody [clone RM465] (R20477)

Catalog No.	Formulation	Size
R20477-0.1ML	Antibody in PBS with 50% glycerol, 1% BSA and 0.09% sodium azide	100 ul

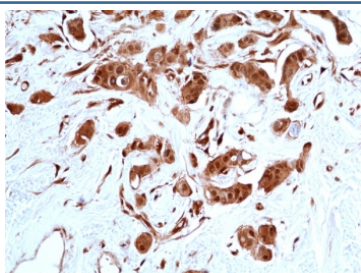
Recombinant **RABBIT MONOCLONAL**

[Bulk quote request](#)

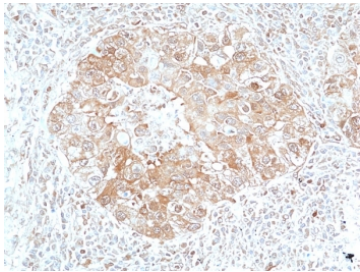
Availability	1-3 business days
Species Reactivity	Human
Format	Purified
Clonality	Recombinant Rabbit Monoclonal
Isotype	Rabbit IgG
Clone Name	RM465
Purity	Protein A purified from animal origin-free supernatant
UniProt	P40763
Localization	Cytoplasmic, nuclear
Applications	Immunohistochemistry (FFPE) : 1:50-1:200 Western Blot : 1:500-1:1000
Limitations	This recombinant STAT3 antibody is available for research use only.



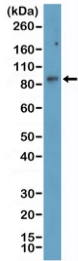
IHC staining of FFPE human breast cancer tissue with recombinant STAT3 antibody at 1:50.



IHC staining of FFPE human breast cancer tissue with recombinant STAT3 antibody at 1:200.



IHC staining of FFPE human lung cancer tissue with recombinant STAT3 antibody at 1:50.



Western blot testing of human HeLa cell lysate with recombinant STAT3 antibody at 1:1000. Predicted molecular weight ~88 kDa.

Description

This antibody reacts to human Stat3.

Application Notes

The stated application concentrations are suggested starting points. Titration of the recombinant STAT3 antibody may be required due to differences in protocols and secondary/substrate sensitivity.

Immunogen

A peptide corresponding to the N-terminus of human Stat3 was used as the immunogen for the recombinant STAT3 antibody.

Storage

Store the recombinant STAT3 antibody at -20°C.