

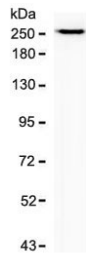
## Recombinant SPTBN2 Antibody / Spectrin beta III [clone SCNB3-2R] (V7447)

Catalog No.	Formulation	Size
V7447-100UG	0.2 mg/ml in 1X PBS with 0.1 mg/ml BSA (US sourced) and 0.05% sodium azide	100 ug
V7447-20UG	0.2 mg/ml in 1X PBS with 0.1 mg/ml BSA (US sourced) and 0.05% sodium azide	20 ug
V7447SAF-100UG	1 mg/ml in 1X PBS; BSA free, sodium azide free	100 ug
V7447IHC-7ML	Prediluted in 1X PBS with 0.1 mg/ml BSA (US sourced) and 0.05% sodium azide; *For IHC use only*	7 ml

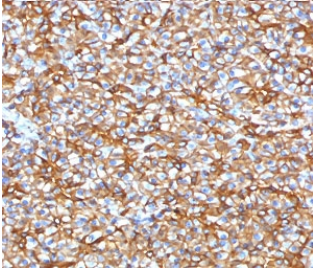
Recombinant **RABBIT MONOCLONAL**

[Bulk quote request](#)

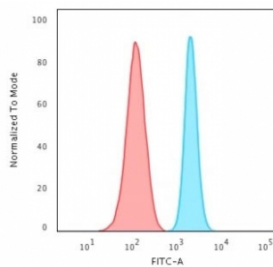
<b>Species Reactivity</b>	Human
<b>Format</b>	Purified
<b>Host</b>	Rabbit
<b>Clonality</b>	Recombinant Rabbit Monoclonal
<b>Isotype</b>	Rabbit IgG, kappa
<b>Clone Name</b>	SCNB3-2R
<b>Purity</b>	Protein A affinity chromatography
<b>UniProt</b>	O15020
<b>Localization</b>	Cell surface, cytoplasm
<b>Applications</b>	Western Blot : 1-2ug/ml Flow Cytometry : 1-2ug/10 <sup>6</sup> cells in 0.1ml Immunohistochemistry (FFPE) : 1-2ug/ml for 30 min at RT Prediluted IHC Only Format : incubate for 30 min at RT (1)
<b>Limitations</b>	This recombinant SPTBN2 antibody is available for research use only.



Western blot testing of human PANC-1 cell lysate with recombinant SPTBN2 antibody (clone SCNB3-2R). Predicted molecular weight ~246 kDa.



IHC testing of FFPE human pancreas with recombinant SPTBN2 antibody (clone SCNB3-2R). Required HIER: boil tissue sections in pH 9 10mM Tris with 1mM EDTA for 10-20 min followed by cooling at RT for 20 min.



FACS testing of fixed and permeabilized human HeLa cells with recombinant SPTBN2 antibody (blue) and isotype control (red).

## Description

Spectrins are principle components of a cell's membrane-cytoskeleton and are composed of two alpha and two beta spectrin subunits. The protein encoded by this gene (SPTBN2), is called spectrin beta non-erythrocytic 2 or beta-III spectrin. It is related to, but distinct from, the beta-II spectrin gene which is also known as spectrin beta non-erythrocytic 1 (SPTBN1). SPTBN2 regulates the glutamate signaling pathway by stabilizing the glutamate transporter EAAT4 at the surface of the plasma membrane. Mutations in this gene cause a form of spinocerebellar ataxia, SCA5, that is characterized by neurodegeneration, progressive locomotor incoordination, dysarthria, and uncoordinated eye movements. [RefSeq]

## Application Notes

Optimal dilution of the recombinant SPTBN2 antibody should be determined by the researcher.

1. The prediluted format is supplied in a dropper bottle and is optimized for use in IHC. After epitope retrieval step (if required), drip mAb solution onto the tissue section and incubate at RT for 30 min.

## Immunogen

Amino acids 356-475 from the human protein were used as the immunogen for this recombinant SPTBN2 antibody.

## Storage

Store the recombinant SPTBN2 antibody at 2-8oC (with azide) or aliquot and store at -20oC or colder (without azide).

## References (2)

