

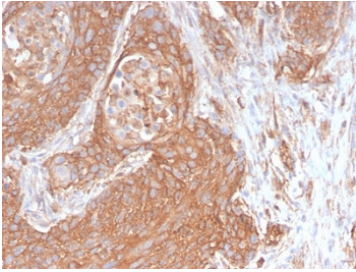
## Recombinant Spectrin beta III Antibody / SPTBN2 [clone SPTBN2/2894R] (V7352)

Catalog No.	Formulation	Size
V7352-100UG	0.2 mg/ml in 1X PBS with 0.1 mg/ml BSA (US sourced) and 0.05% sodium azide	100 ug
V7352-20UG	0.2 mg/ml in 1X PBS with 0.1 mg/ml BSA (US sourced) and 0.05% sodium azide	20 ug
V7352SAF-100UG	1 mg/ml in 1X PBS; BSA free, sodium azide free	100 ug
V7352IHC-7ML	Prediluted in 1X PBS with 0.1 mg/ml BSA (US sourced) and 0.05% sodium azide; *For IHC use only*	7 ml

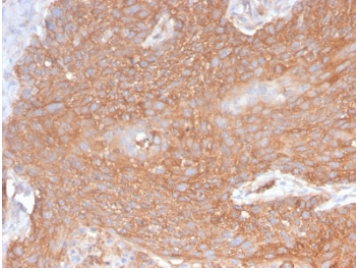
Recombinant **RABBIT MONOCLONAL**

[Bulk quote request](#)

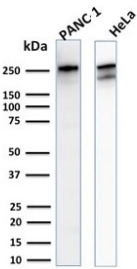
<b>Species Reactivity</b>	Human
<b>Format</b>	Purified
<b>Host</b>	Rabbit
<b>Clonality</b>	Recombinant Rabbit Monoclonal
<b>Isotype</b>	Rabbit IgG, kappa
<b>Clone Name</b>	SPTBN2/2894R
<b>Purity</b>	Protein A affinity chromatography
<b>UniProt</b>	O15020
<b>Localization</b>	Cell surface, cytoplasm
<b>Applications</b>	Flow Cytometry : 1-2ug/10 <sup>6</sup> cells ELISA : 2-4ug/ml (order BSA/azide-free format) Western Blot : 1-2ug/ml Immunohistochemistry (FFPE) : 1-2ug/ml for 30 min at RT
<b>Limitations</b>	This recombinant Spectrin beta III antibody is available for research use only.



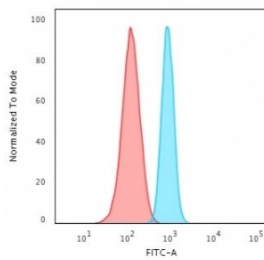
IHC testing of FFPE human pancreatic cancer with recombinant Spectrin beta III antibody (clone SPTBN2/2894R). Required HIER: boil tissue sections in pH 9 10mM Tris with 1mM EDTA for 10-20 min followed by cooling at RT for 20 min.



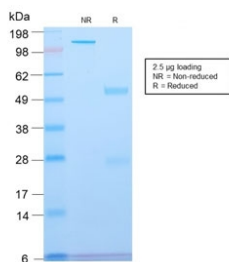
IHC testing of FFPE human pancreatic cancer with recombinant Spectrin beta III antibody (clone SPTBN2/2894R). Required HIER: boil tissue sections in pH 9 10mM Tris with 1mM EDTA for 10-20 min followed by cooling at RT for 20 min.



Western blot testing of human PANC-1 and HeLa cell lysate with recombinant Spectrin beta III antibody (clone SPTBN2/2894R). Predicted molecular weight ~246 kDa.



FACS testing of fixed and permeabilized human HeLa cells with recombinant Spectrin beta III antibody (blue) and isotype control (red).



SDS-PAGE analysis of purified, BSA-free recombinant Spectrin beta III antibody (clone SPTBN2/2894R) as confirmation of integrity and purity.

## Description

Spectrin is an actin binding protein that is a major component of the plasma membrane skeleton. Spectrins function as membrane organizers and stabilizers by forming dimers, tetramers and higher polymers. Vertebrate spectrins have two alpha-subunits (alpha-I/alpha-II), four beta-subunits (beta-I-beta-IV) and a beta-H subunit creating diversity and specialization of function. Spectrin and spectrin are present in erythrocytes, whereas spectrin II (also designated fodrin) and spectrin I (also designated fodrin) are present in other somatic cells. The spectrin tetramers in erythrocytes act as barriers to lateral diffusion, but spectrin dimers seem to lack this function. Spectrin III is highly homologous to both spectrin I and spectrin II. Spectrin III is highly expressed in brain, kidney, pancreas and liver, and at lower levels in lung and placenta.

## Application Notes

The concentration stated for each application is a general starting point. Variations in protocols, secondaries and substrates may require the recombinant Spectrin beta III antibody to be titered up or down for optimal performance.

1. The prediluted format is supplied in a dropper bottle and is optimized for use in IHC. After epitope retrieval step (if required), drip mAb solution onto the tissue section and incubate at RT for 30 min.

## Immunogen

Human recombinant partial protein corresponding to amino acids 356-475 was used as the immunogen for this recombinant Spectrin beta III antibody.

## Storage

Store the recombinant Spectrin beta III antibody at 2-8oC (with azide) or aliquot and store at -20oC or colder (without azide).

## References (2)