

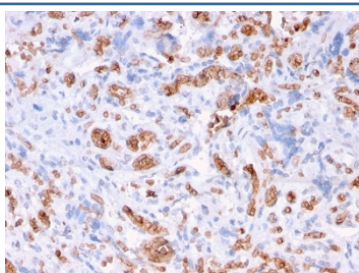
Recombinant Spectrin alpha 1 Antibody / SPTA1 [clone rSPTA1/1832] (V7495)

Catalog No.	Formulation	Size
V7495-100UG	0.2 mg/ml in 1X PBS with 0.1 mg/ml BSA (US sourced) and 0.05% sodium azide	100 ug
V7495-20UG	0.2 mg/ml in 1X PBS with 0.1 mg/ml BSA (US sourced) and 0.05% sodium azide	20 ug
V7495SAF-100UG	1 mg/ml in 1X PBS; BSA free, sodium azide free	100 ug
V7495IHC-7ML	Prediluted in 1X PBS with 0.1 mg/ml BSA (US sourced) and 0.05% sodium azide; *For IHC use only*	7 ml

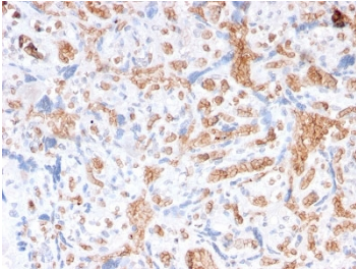
Recombinant **MOUSE MONOCLONAL**

[Bulk quote request](#)

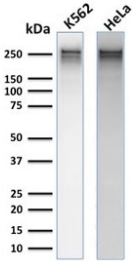
Availability	1-3 business days
Species Reactivity	Human
Format	Purified
Clonality	Recombinant Mouse Monoclonal
Isotype	Mouse IgG1, kappa
Clone Name	rSPTA1/1832
Purity	Protein G affinity chromatography
UniProt	P02549
Localization	Cytoplasmic, cell surface
Applications	Western Blot : 1-2ug/ml Immunohistochemistry (FFPE) : 1-2ug/ml for 30 min at RT (1)
Limitations	This recombinant Spectrin alpha 1 antibody is available for research use only.



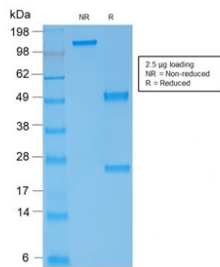
IHC staining of FFPE human placenta with Spectrin alpha 1 antibody (clone rSPTA1/1832). Required HIER: boil tissue sections in pH 9 10mM Tris with 1mM EDTA for 10-20 min followed by cooling at RT for 20 min.



IHC staining of FFPE human placenta with Spectrin alpha 1 antibody (clone rSPTA1/1832). Required HIER: boil tissue sections in pH 9 10mM Tris with 1mM EDTA for 10-20 min followed by cooling at RT for 20 min.



Western blot testing of human HeLa and K562 cell lysate with recombinant Spectrin alpha 1 antibody (clone rSPTA1/1832). Expected molecular weight: 260-280 kDa.



SDS-PAGE analysis of purified, BSA-free Spectrin alpha 1 antibody (clone rSPTA1/1832) as confirmation of integrity and purity.

Description

Spectrin is an actin crosslinking and molecular scaffold protein that links the plasma membrane to the actin cytoskeleton, and functions in the determination of cell shape, arrangement of transmembrane proteins, and organization of organelles. Spectrins function as membrane organizers and stabilizers, composed of non-homologous and chains, which aggregate side-to-side in an anti-parallel fashion to form dimers, tetramers and higher polymers. Spectrin Ia and spectrin Ib are present in erythrocytes, whereas spectrin IIa (also designated fodrin alpha) and spectrin IIb (also designated fodrin beta) are present in other somatic cells. The spectrin tetramers in erythrocytes act as barriers to lateral diffusion, but spectrin dimers seem to lack this function.

Application Notes

Optimal dilution of the recombinant Spectrin alpha 1 antibody should be determined by the researcher.

1. The prediluted format is supplied in a dropper bottle and is optimized for use in IHC. After epitope retrieval step (if required), drip mAb solution onto the tissue section and incubate at RT for 30 min.

Immunogen

A portion of amino acids 356-475 from the human protein was used as the immunogen for the recombinant Spectrin alpha 1 antibody.

Storage

Store the recombinant Spectrin alpha 1 antibody at 2-8°C (with azide) or aliquot and store at -20°C or colder (without azide).

