

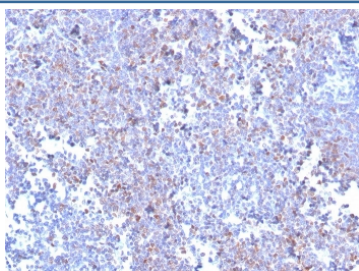
## Recombinant SOX11 Antibody [clone SOX11/3235R] (V8688)

Catalog No.	Formulation	Size
V8688-100UG	0.2 mg/ml in 1X PBS with 0.1 mg/ml BSA (US sourced) and 0.05% sodium azide	100 ug
V8688-20UG	0.2 mg/ml in 1X PBS with 0.1 mg/ml BSA (US sourced) and 0.05% sodium azide	20 ug
V8688SAF-100UG	1 mg/ml in 1X PBS; BSA free, sodium azide free	100 ug

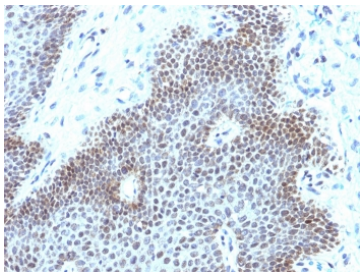
Recombinant **RABBIT MONOCLONAL**

[Bulk quote request](#)

<b>Availability</b>	1-3 business days
<b>Species Reactivity</b>	Human
<b>Format</b>	Purified
<b>Clonality</b>	Recombinant Rabbit Monoclonal
<b>Isotype</b>	Rabbit IgG, kappa
<b>Clone Name</b>	SOX11/3235R
<b>Purity</b>	Protein A affinity chromatography
<b>UniProt</b>	P35716
<b>Localization</b>	Nuclear, cytoplasmic
<b>Applications</b>	Immunohistochemistry (FFPE) : 2-4ug/ml for 30 minutes at RT
<b>Limitations</b>	This recombinant SOX11 antibody is available for research use only.



IHC staining of FFPE human mantle cell lymphoma with recombinant SOX11 antibody (clone SOX11/3235R). HIER: boil tissue sections in pH 9 10mM Tris with 1mM EDTA for 20 min and allow to cool before testing.



IHC staining of FFPE human cervical carcinoma with recombinant SOX11 antibody (clone SOX11/3235R). HIER: boil tissue sections in pH 9 10mM Tris with 1mM EDTA for 20 min and allow to cool before testing.

## Description

Recognizes a protein of ~47kDa, identified as SOX11. This MAb is highly specific and does not cross-react with other members of the SOX-family. Mantle cell lymphoma (MCL) accounts for 5% to 10% of mature B-cell neoplasms and is an aggressive disease genetically characterized by overexpression of Cyclin D1. Cyclin D1 overexpression is the hallmark of MCL. However, approximately 5%-10% of MCLs lack Cyclin D1 expression and may be misdiagnosed. Almost all Cyclin D1-positive as well as Cyclin D1-negative MCL, show overexpression of SOX-11. The detection of this transcription factor is a useful biomarker for identifying true cyclin D1-negative MCL.

## Application Notes

Optimal dilution of the recombinant SOX11 antibody should be determined by the researcher.

## Immunogen

A portion of amino acids 300-400 from the human protein was used as the immunogen for the recombinant SOX11 antibody.

## Storage

Store the recombinant SOX11 antibody at 2-8°C (with azide) or aliquot and store at -20°C or colder (without azide).