

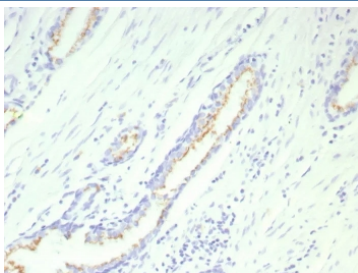
SLC45A3 Antibody / Prostate-Specific Androgen-Regulated Protein Antibody [clone SLC45A3/9216R] (V5612)

Catalog No.	Formulation	Size
V5612-100UG	0.2 mg/ml in 1X PBS with 0.1 mg/ml BSA (US sourced), 0.05% sodium azide	100 ug
V5612-20UG	0.2 mg/ml in 1X PBS with 0.1 mg/ml BSA (US sourced), 0.05% sodium azide	20 ug
V5612SAF-100UG	1 mg/ml in 1X PBS; BSA free, sodium azide free	100 ug

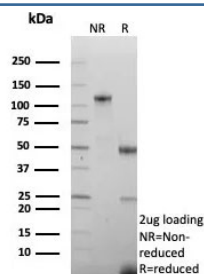
Recombinant **RABBIT MONOCLONAL**

[Bulk quote request](#)

Availability	1-3 business days
Species Reactivity	Human
Format	Purified
Host	Rabbit
Clonality	Recombinant Rabbit Monoclonal
Isotype	Rabbit IgG, kappa
Clone Name	SLC45A3/9216R
Purity	Protein A/G affinity
UniProt	Q96JT2
Localization	Membrane
Applications	Immunohistochemistry (FFPE) : 1-2ug/ml
Limitations	This recombinant SLC45A3 antibody is available for research use only.



SLC45A3 Antibody for IHC. Immunohistochemistry analysis of Prostein / SLC45A3 antibody staining in FFPE human prostate tissue using clone SLC45A3/9216R. Strong cytoplasmic and perinuclear staining is observed in prostate glandular epithelial cells lining the luminal structures, consistent with Golgi-associated localization of Prostein, while surrounding stromal cells remain negative. The staining pattern highlights epithelial cell morphology and glandular architecture, supporting the role of SLC45A3 as a prostate-restricted marker in immunohistochemistry. Heat-induced epitope retrieval was performed in pH 9 Tris-EDTA buffer for 20 minutes followed by cooling prior to antibody incubation.



SDS-PAGE analysis of purified, BSA-free recombinant SLC45A3 antibody (clone SLC45A3/9216R) as confirmation of integrity and purity.

Description

Solute carrier family 45 member 3 (SLC45A3) is a prostate-enriched protein encoded by the SLC45A3 gene and localized to the Golgi apparatus of secretory epithelial cells. SLC45A3 Antibody is used to detect Prostein expression as a prostate-specific androgen-regulated protein, providing a useful tool for studying androgen receptor-driven transcriptional programs and their impact on prostate biology.

SLC45A3 antibody, also referred to as Prostein antibody or prostate-specific androgen-regulated protein antibody, is transcriptionally regulated by androgen receptor signaling and is strongly induced in response to androgen stimulation. This regulation places SLC45A3 among key downstream targets of AR activity, linking its expression directly to hormone-dependent cellular processes in prostate epithelial cells. As a result, SLC45A3 expression is often used as an indicator of active androgen signaling in both normal and disease contexts.

The SLC45A3 protein contributes to the functional state of prostate epithelial cells through its association with secretory pathways and intracellular transport processes. Its localization to the Golgi apparatus supports a role in protein processing and trafficking, particularly in cells with high secretory output. This function is consistent with the biology of prostate epithelial cells, which rely on regulated secretion for normal glandular activity.

In prostate cancer, SLC45A3 expression is frequently retained in androgen-responsive tumors, reflecting continued dependence on AR signaling pathways. Alterations in SLC45A3 expression may therefore provide insight into changes in androgen responsiveness, including responses to hormone-targeted therapies or progression to androgen-independent states. Its expression pattern makes it relevant for studies examining the molecular effects of androgen signaling modulation in experimental systems.

SLC45A3 Antibody supports investigation of androgen-regulated protein expression across prostate tissue models, cell lines, and tumor samples. By enabling detection of Prostein in the context of AR signaling, it provides a valuable tool for exploring hormone-driven regulation, epithelial differentiation, and the molecular mechanisms underlying prostate cancer development and progression.

Application Notes

Optimal dilution of the SLC45A3 Antibody / Prostate-Specific Androgen-Regulated Protein Antibody should be determined by the researcher.

Immunogen

A recombinant fragment (within amino acids 300-500) of human SLC45A3 protein was used as the immunogen for the SLC45A3 Antibody / Prostate-Specific Androgen-Regulated Protein Antibody.

Storage

Aliquot the recombinant SLC45A3 antibody and store frozen at -20oC or colder. Avoid repeated freeze-thaw cycles.

Alternate Names

Prostein antibody, SLC45A3 antibody, Androgen-regulated prostate protein antibody, Prostein AR target antibody,

SLC45A3 androgen response antibody