

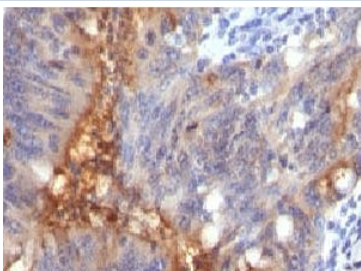
Recombinant Secretory Component Glycoprotein Antibody / ECM1 [clone SRGP85] (V7065)

Catalog No.	Formulation	Size
V7065-100UG	0.2 mg/ml in 1X PBS with 0.1 mg/ml BSA (US sourced) and 0.05% sodium azide	100 ug
V7065-20UG	0.2 mg/ml in 1X PBS with 0.1 mg/ml BSA (US sourced) and 0.05% sodium azide	20 ug
V7065SAF-100UG	1 mg/ml in 1X PBS; BSA free, sodium azide free	100 ug
V7065IHC-7ML	Prediluted in 1X PBS with 0.1 mg/ml BSA (US sourced) and 0.05% sodium azide; *For IHC use only*	7 ml

Recombinant **MOUSE MONOCLONAL**

[Bulk quote request](#)

Availability	1-3 business days
Species Reactivity	Human
Format	Purified
Clonality	Recombinant Mouse Monoclonal
Isotype	Mouse IgG1, kappa
Clone Name	SRGP85
Purity	Protein G affinity chromatography
UniProt	Q16610
Localization	Cell surface and cytoplasmic
Applications	Immunohistochemistry (FFPE) : 1-2ug/ml for 30 min at RT Prediluted IHC Only Format : incubate for 30 min at RT (1)
Limitations	This Secretory Component Glycoprotein antibody is available for research use only.



IHC testing of FFPE human colon carcinoma and Secretory Component Glycoprotein antibody (clone SRGP85). Staining of formalin-fixed tissues requires boiling tissue sections in pH 9 10mM Tris with 1mM EDTA for 10-20 min followed by cooling at RT for 20 min.

Description

Extracellular matrix protein 1 (ECM1), also called Secretory component p85, a soluble protein that is involved in endochondral bone formation, angiogenesis, and tumor biology. It also interacts with a variety of extracellular and structural proteins, contributing to the maintenance of skin integrity and homeostasis. Mutations in this gene are associated with lipoid proteinosis disorder (also known as hyalinosis cutis et mucosae or Urbach-Wiethe disease) that is characterized by generalized thickening of skin, mucosae and certain viscera. [RefSeq]

Application Notes

Optimal dilution of the Secretory Component Glycoprotein antibody should be determined by the researcher.

1. The prediluted format is supplied in a dropper bottle and is optimized for use in IHC. After epitope retrieval step (if required), drip mAb solution onto the tissue section and incubate at RT for 30 min.

Immunogen

Recombinant human protein was used as the immunogen for the Secretory Component Glycoprotein antibody.

Storage

Store the Secretory Component Glycoprotein antibody at 2-8°C (with azide) or aliquot and store at -20°C or colder (without azide).