

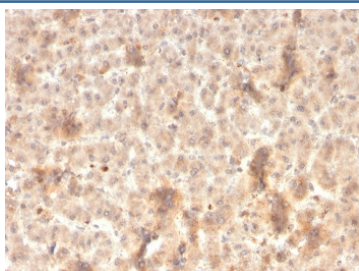
## Recombinant Secretory Component Antibody / ECM1 [clone rSPM217] (V8508)

Catalog No.	Formulation	Size
V8508-100UG	0.2 mg/ml in 1X PBS with 0.1 mg/ml BSA (US sourced) and 0.05% sodium azide	100 ug
V8508-20UG	0.2 mg/ml in 1X PBS with 0.1 mg/ml BSA (US sourced) and 0.05% sodium azide	20 ug
V8508SAF-100UG	1 mg/ml in 1X PBS; BSA free, sodium azide free	100 ug

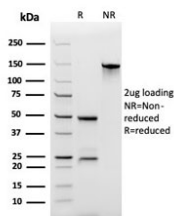
### Recombinant MOUSE MONOCLONAL

[Bulk quote request](#)

Availability	1-3 business days
Species Reactivity	Human
Format	Purified
Host	Mouse
Clonality	Recombinant Mouse Monoclonal
Isotype	Mouse IgG1, kappa
Clone Name	rSPM217
Purity	Protein G affinity chromatography
UniProt	Q16610
Localization	Cell surface, cytoplasmic
Applications	Immunohistochemistry (FFPE) : 1-2ug/ml for 30 minutes at RT
Limitations	This recombinant Secretory Component antibody is available for research use only.



IHC staining of FFPE human liver with recombinant Secretory Component antibody (clone rSPM217). HIER: boil tissue sections in pH 9 10mM Tris with 1mM EDTA for 20 min and allow to cool before testing.



SDS-PAGE analysis of purified, BSA-free recombinant Secretory Component antibody (clone rSPM217) as confirmation of integrity and purity.

## Description

This MAb reacts with a reduction-resistant epitope present in both free and SIgA bound Secretory Component. It does not react with the cell lines lacking secretory component. The antibody is useful for studying the distribution and level of both free and bound secretory component. Secretory component is differentially expressed in epithelium, and the antibody is a popular marker for identifying subpopulations of epithelial cells and epithelial differentiation. The Secretory component antibody is a useful research tool for studying mucosal immunity, inflammation, remodeling, differentiation and tumorigenesis, all processes associated with differential secretory component expression.

## Application Notes

Optimal dilution of the recombinant Secretory Component antibody should be determined by the researcher.

## Immunogen

Recombinant full-length human protein was used as the immunogen for the recombinant Secretory Component antibody.

## Storage

Store the recombinant Secretory Component antibody at 2-8°C (with azide) or aliquot and store at -20°C or colder (without azide).