

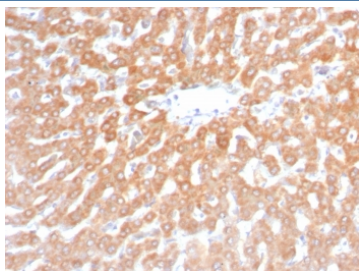
Recombinant SDHB Antibody / Succinate dehydrogenase B [clone rSDHB/6948] (V4679)

Catalog No.	Formulation	Size
V4679-100UG	0.2 mg/ml in 1X PBS with 0.1 mg/ml BSA (US sourced), 0.05% sodium azide	100 ug
V4679-20UG	0.2 mg/ml in 1X PBS with 0.1 mg/ml BSA (US sourced), 0.05% sodium azide	20 ug
V4679SAF-100UG	1 mg/ml in 1X PBS; BSA free, sodium azide free	100 ug

Recombinant MOUSE MONOCLONAL

[Bulk quote request](#)

Availability	1-3 business days
Species Reactivity	Human
Format	Purified
Host	Mouse
Clonality	Recombinant Mouse Monoclonal
Isotype	Mouse IgG1, kappa
Clone Name	rSDHB/6948
Purity	Protein A/G affinity
UniProt	P21912
Localization	Cytoplasm (Mitochondria)
Applications	Immunohistochemistry (FFPE) : 1-2ug/ml for 30 min at RT
Limitations	This recombinant SDHB antibody is available for research use only.



IHC staining of FFPE human hepatocellular carcinoma tissue with recombinant SDHB antibody (clone rSDHB/6948). HIER: boil tissue sections in pH 9 10mM Tris with 1mM EDTA for 20 min and allow to cool before testing.

Description

Succinate dehydrogenase B (SDHB) is an iron-sulfur subunit of mitochondrial complex II, a key component of the citric

acid cycle and the electron transport chain, a respiratory complex that catalyzes the oxidation of succinate in the mitochondrial membrane. Many cancers are generally positive for SDHB, including renal cell carcinomas and gastrointestinal stromal tumors. A subset of RCC and GIST tumors that are associated with SDH mutations, Carney-Stratakis Syndrome or Carney Triad exhibit a loss of SDHB expression.

Application Notes

Optimal dilution of the recombinant SDHB antibody should be determined by the researcher.

Immunogen

A recombinant partial protein sequence (within amino acids 180-280) from the human protein was used as the immunogen for the recombinant SDHB antibody.

Storage

Aliquot the recombinant SDHB antibody and store frozen at -20°C or colder. Avoid repeated freeze-thaw cycles.