

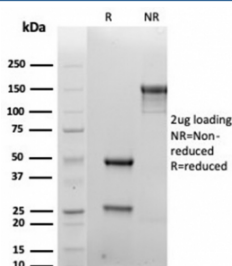
Recombinant SDC1 Antibody / Syndecan-1 / CD138 [clone rSDC1/6866] (V5512)

Catalog No.	Formulation	Size
V5512-100UG	0.2 mg/ml in 1X PBS with 0.1 mg/ml BSA (US sourced), 0.05% sodium azide	100 ug
V5512-20UG	0.2 mg/ml in 1X PBS with 0.1 mg/ml BSA (US sourced), 0.05% sodium azide	20 ug
V5512SAF-100UG	1 mg/ml in 1X PBS; BSA free, sodium azide free	100 ug

Recombinant MOUSE MONOCLONAL

[Bulk quote request](#)

Availability	1-3 business days
Species Reactivity	Human
Format	Purified
Clonality	Recombinant Mouse Monoclonal
Isotype	Mouse IgG1, kappa
Clone Name	rSDC1/6866
Purity	Protein A/G affinity
UniProt	P18827
Localization	Extracellular, Membrane
Applications	Flow Cytometry : 1-2ug/million cells Immunohistochemistry (FFPE) : 1-2ug/ml
Limitations	This recombinant SDC1 antibody is available for research use only.



SDS-PAGE analysis of purified, BSA-free recombinant SDC1 antibody (clone rSDC1/6866) as confirmation of integrity and purity.

Description

CD138, also designated syndecan-1, is a member of the syndecan family of four transmembrane spanning proteins capable of binding to heparan sulfate and chondroitin sulfate molecules. The syndecans main functions are to control cell

growth and differentiation as well as to maintain cell adhesion and cell migration. Under normal conditions CD138 is predominantly expressed on mature plasma cells and early preB-cells, while other haematolymphoid cells are negative. Various types of epithelial cells are also CD138 positive. Squamous epithelial cells show strong membranous and some cytoplasmic staining, except for the mature superficial squamous epithelial cells which are unstained. Mature mesenchymal and neural tissues are not stained. Among haematolymphoid neoplasms, CD138 is expressed in practically all cases of plasma cell malignancies. Among non-haematolymphoid neoplasms the expression of CD138 is found in various types of carcinoma.

Application Notes

Optimal dilution of the recombinant SDC1 antibody should be determined by the researcher.

Immunogen

A recombinant fragment (within amino acids 200-300) of human CD138 protein was used as the immunogen for the recombinant SDC1 antibody.

Storage

Aliquot the recombinant SDC1 antibody and store frozen at -20oC or colder. Avoid repeated freeze-thaw cycles.