

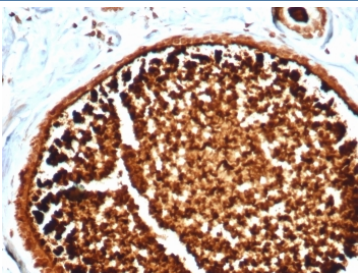
SCGB2A2 Antibody for IHC / Mammaglobin A Antibody [clone MGB/4812R] (V9264)

Catalog No.	Formulation	Size
V9264-100UG	0.2 mg/ml in 1X PBS with 0.1 mg/ml BSA (US sourced), 0.05% sodium azide	100 ug
V9264-20UG	0.2 mg/ml in 1X PBS with 0.1 mg/ml BSA (US sourced), 0.05% sodium azide	20 ug
V9264SAF-100UG	1 mg/ml in 1X PBS; BSA free, sodium azide free	100 ug

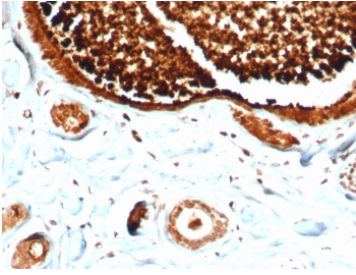
Recombinant **RABBIT MONOCLONAL**

[Bulk quote request](#)

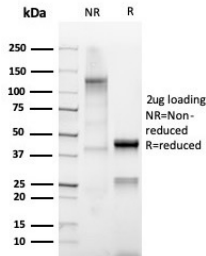
Availability	1-3 business days
Species Reactivity	Human
Format	Purified
Host	Rabbit
Clonality	Recombinant Rabbit Monoclonal
Isotype	Rabbit IgG
Clone Name	MGB/4812R
Purity	Protein A/G affinity
UniProt	Q13296
Localization	Cytoplasm
Applications	Immunohistochemistry (FFPE) : 1-2ug/ml
Limitations	This SCGB2A2 antibody is available for research use only.



SCGB2A2 Antibody for IHC clone MGB/4812R immunohistochemistry of human lactating breast tissue. FFPE human lactating breast tissue was stained with SCGB2A2 Antibody for IHC. HRP-DAB brown chromogenic signal highlights strong cytoplasmic staining in secretory epithelial cells lining mammary glandular structures, consistent with the high expression of Mammaglobin A / SCGB2A2 in lactating breast epithelium, while surrounding stromal cells show minimal staining. Heat-induced epitope retrieval was performed by boiling tissue sections in pH 9 10mM Tris with 1mM EDTA for 20 minutes followed by cooling prior to staining.



SCGB2A2 Antibody for IHC clone MGB/4812R immunohistochemistry of human lactating breast tissue. FFPE human lactating breast tissue was stained with SCGB2A2 Antibody for IHC. HRP-DAB brown chromogenic signal highlights strong cytoplasmic staining in secretory epithelial cells within mammary glandular structures, consistent with elevated Mammaglobin A / SCGB2A2 expression in lactating breast epithelium, while surrounding stromal cells and connective tissue elements show minimal staining. Heat-induced epitope retrieval was performed by boiling tissue sections in pH 9 10mM Tris with 1mM EDTA for 20 minutes followed by cooling prior to staining.



SDS-PAGE analysis of purified, BSA-free recombinant SCGB2A2 antibody (clone MGB/4812R) as confirmation of integrity and purity.

Description

Mammaglobin A (SCGB2A2) is a secreted epithelial glycoprotein encoded by the SCGB2A2 gene and belongs to the secretoglobulin family of small secreted proteins expressed predominantly in mammary epithelium. SCGB2A2 Antibody for IHC recognizes Mammaglobin A and is developed for immunohistochemistry-based detection of this breast-associated protein in formalin-fixed, paraffin-embedded tissue sections.

SCGB2A2 antibody, also referred to as Mammaglobin A antibody or Mammaglobin antibody in the literature, detects a protein strongly associated with mammary epithelial differentiation. Mammaglobin A is produced by luminal epithelial cells of the mammary gland and is secreted into glandular lumens as part of epithelial secretory activity. Because of this relatively restricted tissue distribution, Mammaglobin A expression is commonly examined in breast tissue and breast carcinoma samples in pathology and cancer research.

Immunohistochemistry analysis enables visualization of Mammaglobin A expression within intact tissue architecture. Using SCGB2A2 Antibody for IHC, Mammaglobin-positive epithelial cells can be detected directly within mammary glandular structures or tumor tissues, allowing researchers to distinguish epithelial tumor cell populations from surrounding stromal components. In breast carcinoma specimens, Mammaglobin immunostaining typically appears as cytoplasmic HRP-DAB brown chromogenic signal in tumor epithelial cells, while stromal cells and non-epithelial components generally show little to no staining.

The ability to examine Mammaglobin expression within preserved tissue morphology makes immunohistochemistry particularly valuable for studies of tumor differentiation and epithelial cell identity. SCGB2A2 Antibody for IHC supports analysis of Mammaglobin A expression patterns across normal mammary tissue, benign lesions, and breast carcinomas. Immunohistochemical detection also enables comparison of staining patterns across multiple tissues, including tissue microarrays that evaluate expression in both normal and cancer specimens.

SCGB2A2 Antibody for IHC clone MGB/4812R is a recombinant rabbit monoclonal antibody designed to support immunohistochemical detection of Mammaglobin A / SCGB2A2 in tissue sections. Antibodies targeting Mammaglobin are widely used in studies of breast epithelial biology, tumor differentiation, and protein expression analysis in breast cancer research.

Application Notes

Optimal dilution of the SCGB2A2 Antibody for IHC antibody should be determined by the researcher.

Immunogen

Recombinant full-length human Mammaglobin/SCGB2A2 protein was used as the immunogen for the recombinant SCGB2A2 antibody.

Storage

Aliquot the SCGB2A2 antibody and store frozen at -20oC or colder. Avoid repeated freeze-thaw cycles.

Alternate Names

Mammaglobin A antibody, Mammaglobin antibody, SCGB2A2 antibody, Secretoglobin family 2A member 2 antibody, Mammary gland secretoglobin antibody