

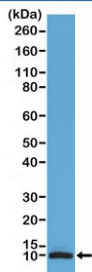
## Recombinant S100B Antibody / C-Terminal [clone RM304] (R20326)

Catalog No.	Formulation	Size
R20326-0.1ML	Antibody in PBS with 50% glycerol, 1% BSA and 0.09% sodium azide	100 ul

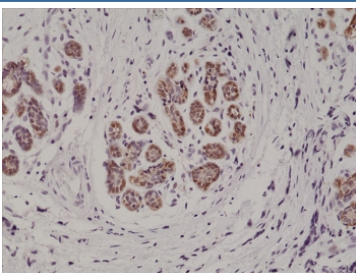
Recombinant **RABBIT MONOCLONAL**

[Bulk quote request](#)

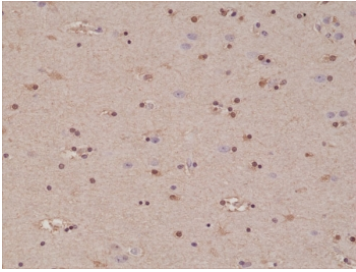
<b>Availability</b>	1-3 business days
<b>Species Reactivity</b>	Human
<b>Format</b>	Purified
<b>Clonality</b>	Recombinant Rabbit Monoclonal
<b>Isotype</b>	Rabbit IgG
<b>Clone Name</b>	RM304
<b>Purity</b>	Protein A purified from animal origin-free supernatant
<b>UniProt</b>	P04271
<b>Localization</b>	Nuclear, cytoplasmic
<b>Applications</b>	Immunohistochemistry (FFPE) : 1:500-1:1000 Western Blot : 1:100-1:200
<b>Limitations</b>	This recombinant S100B antibody is available for research use only.



Western blot testing of human brain tissue lysate with recombinant S100B antibody at 1:100 dilution. Predicted molecular weight ~11 kDa.



IHC testing of formalin fixed and paraffin embedded human breast cancer tissue with recombinant S100B antibody at 1:1000 dilution. HIER: steam section in pH6 citrate buffer for 20 min and allow to cool prior to staining.



IHC testing of formalin fixed and paraffin embedded human brain tissue with recombinant S100B antibody at 1:1000 dilution. HIER: steam section in pH6 citrate buffer for 20 min and allow to cool prior to staining.

## Description

This antibody reacts to human S100-B (S-100 protein beta chain).

## Application Notes

The stated application concentrations are suggested starting points. Titration of the recombinant S100B antibody may be required due to differences in protocols and secondary/substrate sensitivity.

## Immunogen

A peptide corresponding to the C-terminus of human S100B was used as the immunogen for the recombinant S100B antibody.

## Storage

Store the recombinant S100B antibody at -20oC.