

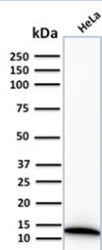
Recombinant S100A4 Antibody / FSP1 [clone S100A4/2750R] (V7344)

Catalog No.	Formulation	Size
V7344-100UG	0.2 mg/ml in 1X PBS with 0.1 mg/ml BSA (US sourced) and 0.05% sodium azide	100 ug
V7344-20UG	0.2 mg/ml in 1X PBS with 0.1 mg/ml BSA (US sourced) and 0.05% sodium azide	20 ug
V7344SAF-100UG	1 mg/ml in 1X PBS; BSA free, sodium azide free	100 ug
V7344IHC-7ML	Prediluted in 1X PBS with 0.1 mg/ml BSA (US sourced) and 0.05% sodium azide; *For IHC use only*	7 ml

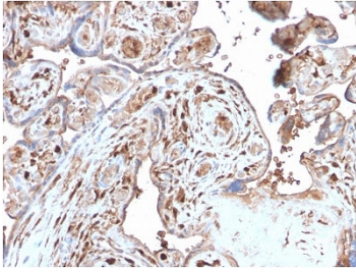
Recombinant **RABBIT MONOCLONAL**

[Bulk quote request](#)

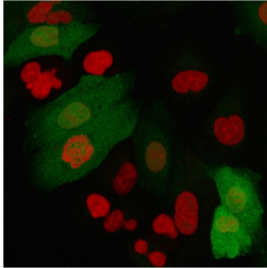
Availability	1-3 business days
Species Reactivity	Human, Mouse
Format	Purified
Clonality	Recombinant Rabbit Monoclonal
Isotype	Rabbit IgG, kappa
Clone Name	S100A4/2750R
Purity	Protein A affinity chromatography
UniProt	P26447
Localization	Cytoplasmic, nuclear
Applications	Western Blot : 1-2ug/ml Flow Cytometry : 1-2ug/10 ⁶ cells Immunofluorescence : 1-2ug/ml Immunohistochemistry (FFPE) : 1-2ug/ml for 30 min at RT
Limitations	This recombinant S100A4 antibody is available for research use only.



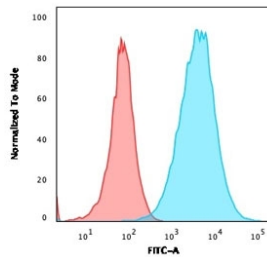
Western blot testing of human HeLa cell lysate with recombinant S100A4 antibody.
Predicted molecular weight ~12 kDa.



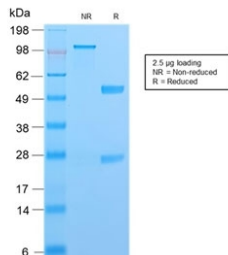
IHC testing of FFPE human placenta with recombinant S100A4 antibody. Required HIER: steam sections in pH 9 10mM Tris with 1mM EDTA for 10-20 min and allow to cool before testing.



Immunofluorescent staining of permeabilized human A549 cells with recombinant S100A4 antibody (green, clone S100A4/2750R) and Reddot (red, nuclear stain).



FACS testing of permeabilized human A549 cells with recombinant S100A4 antibody (blue, clone S100A4/2750R) and isotype control (red).



SDS-PAGE analysis of purified, BSA-free recombinant S100A4 antibody as confirmation of integrity and purity.

Description

S100A4 belongs to the S100 super-family of proteins containing 2 EF-hand calcium-binding domains. S100 genes include at least 25 members, including S100A1-S100A18, trichohyalin, filaggrin, repetin, S100P, and S100Z. S100A4 exerts its function via direct interaction with a number of proteins including P53, P63, non-muscle myosin IIA, 64 integrin, and liprin b1. S100A4 is overexpressed in highly metastatic cancers, which makes it useful as a marker of tumor progression.

Application Notes

The optimal dilution of the recombinant S100A4 antibody for each application should be determined by the researcher.

1. The prediluted format is supplied in a dropper bottle and is optimized for use in IHC. After epitope retrieval step (if required), drip mAb solution onto the tissue section and incubate at RT for 30 min.

Immunogen

A portion of amino acids 1-200 from the human protein was used as the immunogen for this recombinant S100A4 antibody.

Storage

Store the recombinant S100A4 antibody at 2-8oC (with azide) or aliquot and store at -20oC or colder (without azide).