

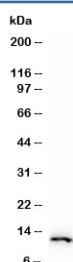
Recombinant S100A4 Antibody / FSP1 [clone PS1A4-1R] (V7339)

Catalog No.	Formulation	Size
V7339-100UG	0.2 mg/ml in 1X PBS with 0.1 mg/ml BSA (US sourced) and 0.05% sodium azide	100 ug
V7339-20UG	0.2 mg/ml in 1X PBS with 0.1 mg/ml BSA (US sourced) and 0.05% sodium azide	20 ug
V7339SAF-100UG	1 mg/ml in 1X PBS; BSA free, sodium azide free	100 ug
V7339IHC-7ML	Prediluted in 1X PBS with 0.1 mg/ml BSA (US sourced) and 0.05% sodium azide; *For IHC use only*	7 ml

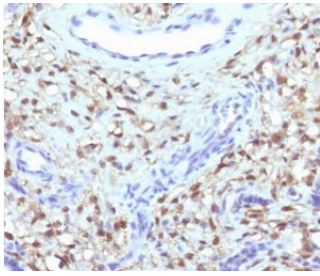
Recombinant **RABBIT MONOCLONAL**

[Bulk quote request](#)

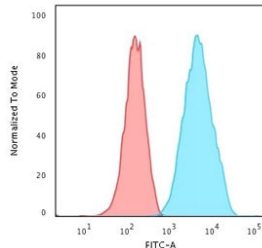
Availability	1-3 business days
Species Reactivity	Human
Format	Purified
Clonality	Recombinant Rabbit Monoclonal
Isotype	Rabbit IgG, kappa
Clone Name	PS1A4-1R
Purity	Protein A affinity chromatography
UniProt	P26447
Localization	Cytoplasmic, nuclear
Applications	Flow Cytometry : 1-2ug/10 ⁶ cells Western Blot : 1-2ug/ml Immunohistochemistry (FFPE) : 1-2ug/ml for 30 min at RT Prediluted IHC Only Format : incubate for 30 min at RT (1)
Limitations	This recombinant S100A4 antibody is available for research use only.



Western blot testing of human HeLa cell lysate with recombinant S100A4 antibody (clone PS1A4-1R). Predicted molecular weight ~12 kDa.



IHC testing of FFPE human placenta with recombinant S100A4 antibody (clone PS1A4-1R). Required HIER: steam sections in 10mM citrate buffer, pH 6, for 10-20 min and allow to cool before testing.



FACS testing of permeabilized human A549 cells with recombinant S100A4 antibody (blue, clone PS1A4-1R) and isotype control (red).

Description

The protein encoded by this gene is a member of the S100 family of proteins containing 2 EF-hand calcium-binding motifs. S100 proteins are localized in the cytoplasm and/or nucleus of a wide range of cells, and involved in the regulation of a number of cellular processes such as cell cycle progression and differentiation. S100 genes include at least 13 members which are located as a cluster on chromosome 1q21. S100A4 may function in motility, invasion, and tubulin polymerization. Chromosomal rearrangements and altered expression of this gene have been implicated in tumor metastasis. Multiple alternatively spliced variants, encoding the same protein, have been identified. [RefSeq]

Application Notes

The stated application concentrations are suggested starting points. Titration of the S100A4 antibody may be required due to differences in protocols and secondary/substrate sensitivity.

1. The prediluted format is supplied in a dropper bottle and is optimized for use in IHC. After epitope retrieval step (if required), drip mAb solution onto the tissue section and incubate at RT for 30 min.

Immunogen

A portion of amino acids 1-200 from the human protein was used as the immunogen for this recombinant S100A4 antibody.

Storage

Store the recombinant S100A4 antibody at 2-8°C (with azide) or aliquot and store at -20°C or colder (without azide).

