

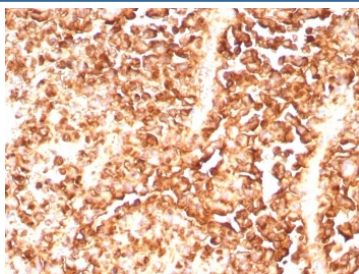
Recombinant S100A1 Antibody [clone S100A1/9244R] (V5517)

Catalog No.	Formulation	Size
V5517-100UG	0.2 mg/ml in 1X PBS with 0.1 mg/ml BSA (US sourced), 0.05% sodium azide	100 ug
V5517-20UG	0.2 mg/ml in 1X PBS with 0.1 mg/ml BSA (US sourced), 0.05% sodium azide	20 ug
V5517SAF-100UG	1 mg/ml in 1X PBS; BSA free, sodium azide free	100 ug

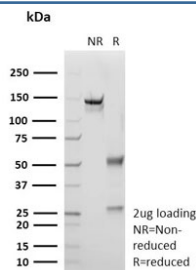
Recombinant **RABBIT MONOCLONAL**

[Bulk quote request](#)

Availability	1-3 business days
Species Reactivity	Human
Format	Purified
Host	Rabbit
Clonality	Recombinant Rabbit Monoclonal
Isotype	Rabbit IgG, kappa
Clone Name	S100A1/9244R
Purity	Protein A/G affinity
UniProt	P23297
Localization	Cytoplasm
Applications	Immunohistochemistry (FFPE) : 1-2ug/ml
Limitations	This recombinant S100A1 antibody is available for research use only.



IHC staining of FFPE human melanoma tissue with recombinant S100A1 antibody (clone S100A1/9244R). HIER: boil tissue sections in pH 9 10mM Tris with 1mM EDTA for 20 min and allow to cool before testing.



SDS PAGE analysis of purified recombinant S100A1 antibody (clone S100A1/9244R) as confirmation of integrity and purity.

Description

S100 belongs to the family of calcium binding proteins. S100A and S100B proteins are two members of the S100 family. S100A is composed of an alpha and a beta chain whereas S100B is composed of two beta chains. This antibody is specific against an epitope located on the alpha-chain (i.e. in S-100A and S-100B) but not on the beta-chain of S-100 (i.e. in S-100B). This antibody can be used to localize S-100A in various tissue sections. S-100 protein has been found in normal melanocytes, Langerhans cells, histiocytes, chondrocytes, lipocytes, skeletal and cardiac muscle, epithelial and myoepithelial cells of the breast, salivary and sweat glands. Neoplasms derived from these cells also express S-100 protein. Almost all malignant melanomas and cases of histiocytosis X are positive for S-100 protein.

Application Notes

Optimal dilution of the recombinant S100A1 antibody should be determined by the researcher.

Immunogen

A recombinant fragment (within amino acids 1-94) of human S100A1 protein was used as the immunogen for the recombinant S100A1 antibody.

Storage

Aliquot the recombinant S100A1 antibody and store frozen at -20°C or colder. Avoid repeated freeze-thaw cycles.