

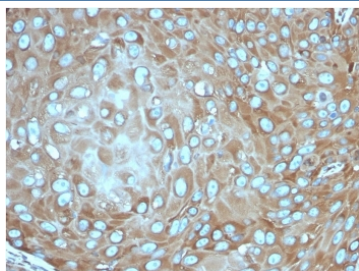
Recombinant RPSA Antibody / 40S Ribosomal protein SA / Laminin Receptor 1 [clone rRPSA/6333] (V8946)

Catalog No.	Formulation	Size
V8946-100UG	0.2 mg/ml in 1X PBS with 0.1 mg/ml BSA (US sourced), 0.05% sodium azide	100 ug
V8946-20UG	0.2 mg/ml in 1X PBS with 0.1 mg/ml BSA (US sourced), 0.05% sodium azide	20 ug
V8946SAF-100UG	1 mg/ml in 1X PBS; BSA free, sodium azide free	100 ug

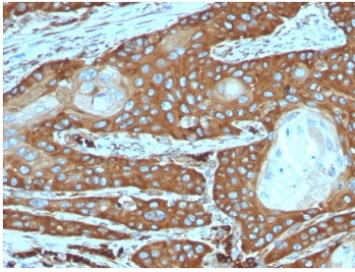
Recombinant MOUSE MONOCLONAL

[Bulk quote request](#)

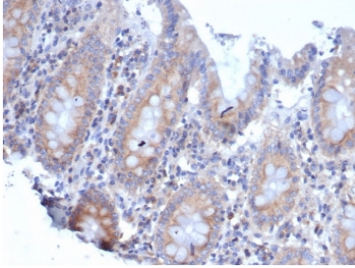
Availability	1-3 business days
Species Reactivity	Human
Format	Purified
Host	Mouse
Clonality	Recombinant Mouse Monoclonal
Isotype	Mouse IgG1, kappa
Clone Name	rRPSA/6333
Purity	Protein A/G affinity
UniProt	P08865
Localization	Cell Surface,Cytoplasmic, Nuclear
Applications	Immunohistochemistry (FFPE) : 1-2ug/ml
Limitations	This recombinant RPSA antibody is available for research use only.



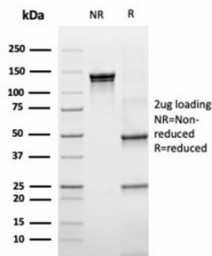
IHC staining of FFPE human skin squamous cell carcinoma with recombinant RPSA antibody (clone rRPSA/6333). HIER: boil tissue sections in pH 9 10mM Tris with 1mM EDTA for 20 min and allow to cool before testing.



IHC staining of FFPE human cervical carcinoma tissue with recombinant RPSA antibody (clone rRPSA/6333). HIER: boil tissue sections in pH 9 10mM Tris with 1mM EDTA for 20 min and allow to cool before testing.



IHC staining of FFPE human colon tissue with recombinant RPSA antibody (clone rRPSA/6333). HIER: boil tissue sections in pH 9 10mM Tris with 1mM EDTA for 20 min and allow to cool before testing.



SDS-PAGE analysis of purified, BSA-free recombinant RPSA antibody (clone rRPSA/6333) as confirmation of integrity and purity.

Description

Laminins, a family of extracellular matrix glycoproteins, are the major non-collagenous constituent of basement membranes. They have been implicated in a wide variety of biological processes including cell adhesion, differentiation, migration, signaling, neurite outgrowth and metastasis. Many of the effects of laminin are mediated through interactions with cell surface receptors. These receptors include members of the integrin family, as well as non-integrin laminin-binding proteins. This gene encodes a high-affinity, non-integrin family, laminin receptor 1. Reportedly, level of laminin receptor transcript is higher in colon carcinoma tissue and lung cancer cell line than their normal counterparts. Also, there is a correlation between the upregulation of this polypeptide in cancer cells and their invasive and metastatic phenotype.

Application Notes

Optimal dilution of the recombinant RPSA antibody should be determined by the researcher.

Immunogen

Recombinant full-length human RPSA protein was used as the immunogen for the recombinant RPSA antibody.

Storage

Aliquot the recombinant RPSA antibody and store frozen at -20°C or colder. Avoid repeated freeze-thaw cycles.

