

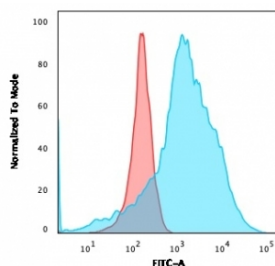
Recombinant Rhombotin 2 Antibody / LMO2 [clone LMO2/3147R] (V9146)

Catalog No.	Formulation	Size
V9146-100UG	0.2 mg/ml in 1X PBS with 0.1 mg/ml BSA (US sourced), 0.05% sodium azide	100 ug
V9146-20UG	0.2 mg/ml in 1X PBS with 0.1 mg/ml BSA (US sourced), 0.05% sodium azide	20 ug
V9146SAF-100UG	1 mg/ml in 1X PBS; BSA free, sodium azide free	100 ug

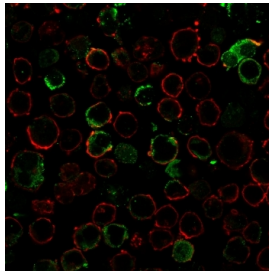
Recombinant **RABBIT MONOCLONAL**

[Bulk quote request](#)

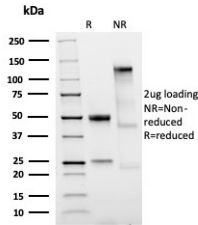
Availability	1-3 business days
Species Reactivity	Human
Format	Purified
Host	Rabbit
Clonality	Recombinant Rabbit Monoclonal
Isotype	Rabbit IgG
Clone Name	LMO2/3147R
Purity	Protein A/G affinity
UniProt	P25791
Localization	Nuclear, Cytoplasmic & Cell Surface
Applications	Flow Cytometry : 1-2ug/million cells Immunofluorescence : 1-2ug/ml
Limitations	This recombinant Rhombotin 2 antibody is available for research use only.



FACS staining of K562 cells using recombinant Rhombotin 2 antibody (blue, clone LMO2/3147R) and isotype control (red).



Immunofluorescent staining of human K562 cells using recombinant Rhombotin 2 antibody (green, clone LMO2/3147R) and phalloidin (red).



SDS-PAGE analysis of purified, BSA-free recombinant Rhombotin 2 antibody (LMO2/3147R) as confirmation of integrity and purity.

Description

The LMO2/Rhombotin 2 protein has a central and crucial role in hematopoietic development and is highly conserved. It has a particular function in normal and lymphatic endothelial cells involving the regulation of angiogenesis and lymph-angiogenesis. Immunohistochemical studies have also demonstrated expression of LMO2 in both normal germinal center B-cells and germinal center-derived B-cell lymphomas, including follicular lymphoma and diffuse large B-cell lymphoma. The use of anti-LMO2 is valuable as a tool in the identification of lymphomas of B-cell origin. LMO2 is useful in differentiating follicular lymphoma (LMO2+) from nodal marginal zone lymphoma (LMO2-). It also is positive in Hodgkin s and Burkitt s lymphomas.

Application Notes

Optimal dilution of the recombinant Rhombotin 2 antibody should be determined by the researcher.

Immunogen

A portion of amino acids 23-140 was used as the immunogen for the recombinant Rhombotin 2 antibody.

Storage

Aliquot the recombinant Rhombotin 2 antibody and store frozen at -20oC or colder. Avoid repeated freeze-thaw cycles.