

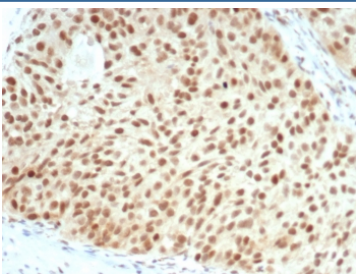
Recombinant Retinoblastoma Antibody [clone RB1/7080R] (V4327)

Catalog No.	Formulation	Size
V4327-100UG	0.2 mg/ml in 1X PBS with 0.1 mg/ml BSA (US sourced), 0.05% sodium azide	100 ug
V4327-20UG	0.2 mg/ml in 1X PBS with 0.1 mg/ml BSA (US sourced), 0.05% sodium azide	20 ug
V4327SAF-100UG	1 mg/ml in 1X PBS; BSA free, sodium azide free	100 ug

Recombinant **RABBIT MONOCLONAL**

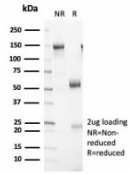
[Bulk quote request](#)

Availability	1-3 business days
Species Reactivity	Human
Format	Purified
Host	Rabbit
Clonality	Recombinant Rabbit Monoclonal
Isotype	Rabbit IgG, kappa
Clone Name	RB1/7080R
Purity	Protein A/G affinity
UniProt	P06400
Localization	Nucleus
Applications	Immunohistochemistry (FFPE) : 1-2ug/ml for 30 minutes at RT
Limitations	This recombinant Retinoblastoma antibody is available for research use only.



IHC staining of FFPE human bladder carcinoma with recombinant Retinoblastoma antibody (clone RB1/7080R). HIER: boil tissue sections in pH 9 10mM Tris with 1mM EDTA for 20 min and allow to cool before testing.

SDS-PAGE analysis of purified, BSA-free recombinant Retinoblastoma antibody (clone RB1/7080R) as confirmation of integrity and purity.



Description

Recognizes a 105kDa phosphoprotein, identified as retinoblastoma (Rb) gene product. Its epitope is localized between aa 703-772. It shows no cross reaction with p107 or p130. It specifically stains the nuclei of BT-20 cells and primary human foreskin fibroblast (HFF) cells. It does not stain the Rb-negative BT549 cells. It reacts with the hyperphosphorylated as well as the un (under) phosphorylated form of the Rb protein. Retinoblastoma gene product plays a key role in cell cycle control. It has been identified as a tumor suppressor gene whose loss of its function leads to tumor development. It is widely expressed in a variety of human tissues including breast, esophageal, squamous cell and cervical carcinoma.

Application Notes

Optimal dilution of the recombinant Retinoblastoma antibody should be determined by the researcher.

Immunogen

Recombinant human full-length protein was used as the immunogen for the recombinant Retinoblastoma antibody.

Storage

Aliquot the recombinant Retinoblastoma antibody and store frozen at -20oC or colder. Avoid repeated freeze-thaw cycles.