

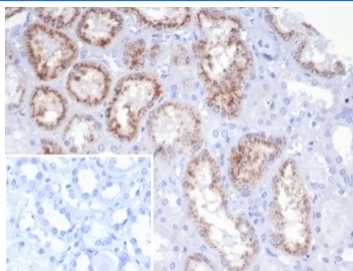
## Recombinant RBP4 Antibody / Retinol Binding Protein 4 [clone rRBP4/7372] (V9724)

Catalog No.	Formulation	Size
V9724-100UG	0.2 mg/ml in 1X PBS with 0.1 mg/ml BSA (US sourced), 0.05% sodium azide	100 ug
V9724-20UG	0.2 mg/ml in 1X PBS with 0.1 mg/ml BSA (US sourced), 0.05% sodium azide	20 ug
V9724SAF-100UG	1 mg/ml in 1X PBS; BSA free, sodium azide free	100 ug

### Recombinant MOUSE MONOCLONAL

[Bulk quote request](#)

Availability	1-3 business days
Species Reactivity	Human
Format	Purified
Clonality	Recombinant Mouse Monoclonal
Isotype	Mouse IgG1, kappa
Clone Name	rRBP4/7372
Purity	Protein A/G affinity
UniProt	P02753
Localization	Secreted
Applications	Immunohistochemistry (FFPE) : 1-2ug/ml
Limitations	This recombinant RBP4 antibody is available for research use only.



IHC staining of FFPE human kidney tissue with recombinant RBP4 antibody (clone rRBP4/7372). Negative control inset: PBS instead of primary antibody to control for secondary binding. HIER: boil tissue sections in pH 9 10mM Tris with 1mM EDTA for 20 min and allow to cool before testing.

## Description

Retinol (Vitamin A) is transported in the blood bound to its carrier protein, retinol-binding protein (RBP), also designated plasma retinol-binding protein (PRBP) or RBP4. A member of the lipocalin family, RBP conveys retinol from stores in the liver to peripheral tissues. In plasma, RBP binds transthyretin (TTR, formerly called prealbumin) to prevent glomerular

filtration of low molecular weight RBP in the kidneys.

## **Application Notes**

Optimal dilution of the recombinant RBP4 antibody should be determined by the researcher.

## **Immunogen**

A portion of amino acids 29-148 was used as the immunogen for the recombinant RBP4 antibody.

## **Storage**

Aliquot the recombinant RBP4 antibody and store frozen at -20oC or colder. Avoid repeated freeze-thaw cycles.