

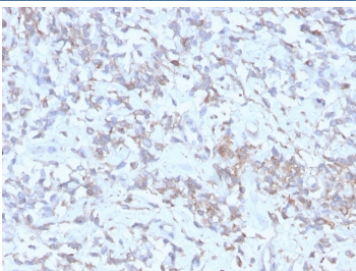
## Recombinant RBP-1 Antibody / Retinol Binding Protein 1 [clone rRBP1/872] (V8050)

Catalog No.	Formulation	Size
V8050-100UG	0.2 mg/ml in 1X PBS with 0.1 mg/ml BSA (US sourced) and 0.05% sodium azide	100 ug
V8050-20UG	0.2 mg/ml in 1X PBS with 0.1 mg/ml BSA (US sourced) and 0.05% sodium azide	20 ug
V8050SAF-100UG	1 mg/ml in 1X PBS; BSA free, sodium azide free	100 ug

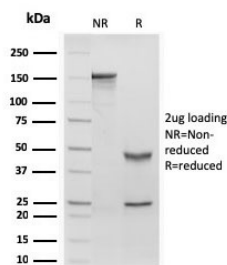
Recombinant **MOUSE MONOCLONAL**

[Bulk quote request](#)

<b>Availability</b>	1-3 business days
<b>Species Reactivity</b>	Human
<b>Format</b>	Purified
<b>Host</b>	Mouse
<b>Clonality</b>	Recombinant Mouse Monoclonal
<b>Isotype</b>	Mouse IgG1, kappa
<b>Clone Name</b>	rRBP1/872
<b>Purity</b>	Protein G affinity chromatography
<b>UniProt</b>	P09455
<b>Localization</b>	Cytoplasmic
<b>Applications</b>	Immunohistochemistry (FFPE) : 1-2ug/ml
<b>Limitations</b>	This recombinant RBP-1 antibody is available for research use only.



IHC: Formalin-fixed, paraffin-embedded human hepatocellular carcinoma stained with recombinant RBP-1 (clone rRBP/872). HIER: boil tissue sections in pH 9 10mM Tris with 1mM EDTA for 20 min and allow to cool before testing.



SDS-PAGE analysis of purified, BSA-free recombinant RBP-1 antibody (clone rRBP1/872) as confirmation of integrity and purity.

## Description

Retinol Binding Protein 1 or Cellular Retinol Binding Protein 1 (CRBP 1), a single-chain glycoprotein belonging to the superfamily of hydrophobic molecule transporter proteins, which is responsible for transport of retinol (vitamin A1) from the liver to peripheral target tissues, like the eye, where it mediates the cellular uptake. RBP1 is synthesized by hepatic parenchymal cells where it becomes bound to its ligand retinol and is then released into the circulation, where it binds further to the protein transthyretin, to form a transporting complex, which is big enough not to be lost by filtration through the kidney glomeruli. It is detected in nearly all tissues with higher expression in adult ovary, pancreas, pituitary gland, adrenal gland, and fetal liver.

## Application Notes

Optimal dilution of the recombinant RBP-1 antibody should be determined by the researcher.

## Immunogen

A recombinant full-length human protein was used as the immunogen for this recombinant RBP-1 antibody. This mAb recognizes an epitope within the 74-182 C-terminal sequence (11kD peptide fragment).

## Storage

Store the recombinant RBP-1 antibody at 2-8oC (with azide) or aliquot and store at -20oC or colder (without azide).