

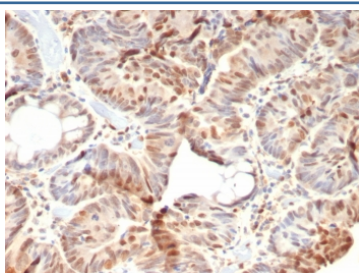
Recombinant Rb1 Antibody / Retinoblastoma [clone rRB1/8060] (V4326)

Catalog No.	Formulation	Size
V4326-100UG	0.2 mg/ml in 1X PBS with 0.1 mg/ml BSA (US sourced), 0.05% sodium azide	100 ug
V4326-20UG	0.2 mg/ml in 1X PBS with 0.1 mg/ml BSA (US sourced), 0.05% sodium azide	20 ug
V4326SAF-100UG	1 mg/ml in 1X PBS; BSA free, sodium azide free	100 ug

Recombinant **MOUSE MONOCLONAL**

[Bulk quote request](#)

Availability	1-3 business days
Species Reactivity	Human
Format	Purified
Clonality	Recombinant Mouse Monoclonal
Isotype	Mouse IgG1, kappa
Clone Name	rRB1/8060
Purity	Protein A/G affinity
UniProt	P06400
Localization	Nucleus
Applications	Western Blot : 1-2ug/ml Immunohistochemistry (FFPE) : 1-2ug/ml for 30 minutes at RT
Limitations	This recombinant Rb1 antibody is available for research use only.



IHC staining of FFPE human colon carcinoma tissue with recombinant Retinoblastoma antibody (clone rRB1/8060). HIER: boil tissue sections in pH 9 10mM Tris with 1mM EDTA for 20 min and allow to cool before testing.

Description

Recognizes a 105kDa phosphoprotein, identified as retinoblastoma (Rb) gene product. Its epitope is localized between aa 703-772. It shows no cross reaction with p107 or p130. It specifically stains the nuclei of BT-20 cells and primary human foreskin fibroblast (HFF) cells. It does not stain the Rb-negative BT549 cells. It reacts with the hyperphosphorylated as

well as the un (under) phosphorylated form of the Rb protein. Retinoblastoma gene product plays a key role in cell cycle control. It has been identified as a tumor suppressor gene whose loss of its function leads to tumor development. It is widely expressed in a variety of human tissues including breast, esophageal, squamous cell and cervical carcinoma.

Application Notes

Optimal dilution of the recombinant Rb1 antibody should be determined by the researcher.

Immunogen

A recombinant human protein fragment of 283 amino acids was used as the immunogen for the recombinant Rb1 antibody. Its epitope is localized between amino acids 703-772.

Storage

Aliquot the recombinant Rb1 antibody and store frozen at -20oC or colder. Avoid repeated freeze-thaw cycles.