

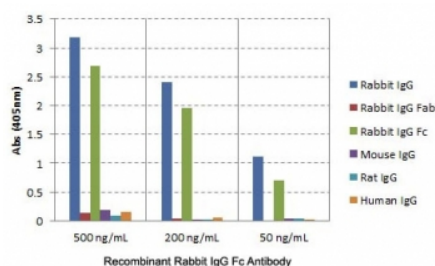
Recombinant Rabbit IgG Fc Antibody (Biotin Conjugate) [clone RMG02] (R20173BTN)

Catalog No.	Formulation	Size
R20173BTN-50UG	1 mg/ml in PBS with 50% glycerol, 1% BSA and 0.09% sodium azide	50 ug

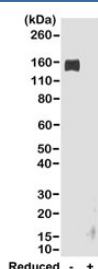
Recombinant **GOAT MONOCLONAL**

[Bulk quote request](#)

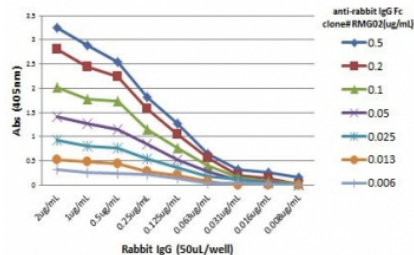
Availability	1-3 business days
Species Reactivity	Rabbit
Format	Biotin Conjugate
Host	Goat
Clonality	Recombinant Goat Monoclonal
Isotype	Goat IgG
Clone Name	RMG02
Purity	Protein G purified from animal origin-free supernatant
Gene ID	N/A
Applications	ELISA : 0.01ug/ml-0.5ug/ml Western Blot (non-reduced) : 0.1-0.5ug/ml
Limitations	This recombinant Rabbit IgG Fc antibody is available for research use only.



ELISA of IgGs from different species shows the recombinant Rabbit IgG Fc antibody reacts to the Fc region of rabbit IgG; no cross reactivity with human IgG, rat IgG, or mouse IgG.



Western blot of nonreduced(-) and reduced(+) rabbit IgG (20ng/lane), using 0.2ug/ml of the recombinant Rabbit IgG Fc antibody. This antibody reacts to nonreduced rabbit IgG (~150 kDa).



ELISA Titration: the plate was coated with different amounts of rabbit IgG. A serial dilution of the recombinant Rabbit IgG Fc antibody was used as the primary and an alkaline phosphatase conjugated anti-goat IgG as the secondary.

Description

This recombinant Rabbit IgG Fc antibody reacts to the Fc region of Rabbit IgG. No cross reactivity with human IgG, rat IgG, or mouse IgG.

Application Notes

The stated application concentrations are suggested starting points. Titration of the recombinant Rabbit IgG Fc antibody may be required due to differences in protocols and secondary/substrate sensitivity.

Immunogen

Rabbit IgG was used as the immunogen for this recombinant Rabbit IgG Fc antibody.

Storage

Store the recombinant Rabbit IgG Fc antibody at -20oC.