

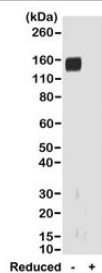
Recombinant Rabbit IgG Fab Antibody [clone RMG01] (R20172)

Catalog No.	Formulation	Size
R20172-100UG	1 mg/ml in PBS with 50% glycerol, 1% BSA and 0.09% sodium azide	100 ug

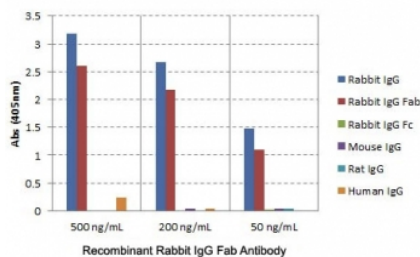
Recombinant **GOAT MONOCLONAL**

[Bulk quote request](#)

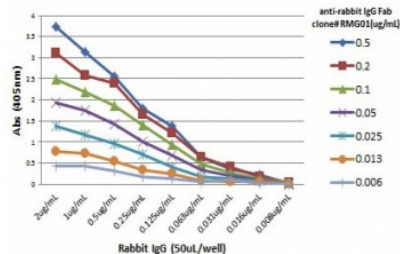
Availability	1-3 business days
Species Reactivity	Rabbit
Format	Purified
Clonality	Recombinant Goat Monoclonal
Isotype	Goat IgG
Clone Name	RMG01
Purity	Protein G purified from animal origin-free supernatant
Gene ID	N/A
Applications	ELISA : 0.01ug/ml-0.5ug/ml Western Blot (non-reduced) : 0.1-0.5ug/ml
Limitations	This recombinant Rabbit IgG Fab antibody is available for research use only.



Western blot of nonreduced(-) and reduced(+) rabbit IgG (20ng/lane), using 0.2ug/ml of recombinant Rabbit IgG Fab antibody. This antibody reacts to nonreduced rabbit IgG (~150 kDa).



ELISA of IgGs from different species shows the recombinant Rabbit IgG Fab antibody reacts to the Fab region of rabbit IgG; no cross reactivity with human/mouse/rat IgG.



ELISA Titration: the plate was coated with different amounts of rabbit IgG. A serial dilution of the recombinant Rabbit IgG Fab antibody was used as the primary and an alkaline phosphatase conjugated anti-goat IgG as the secondary.

Description

This recombinant Rabbit IgG Fab antibody reacts to the Fab region of Rabbit IgG. No cross reactivity with human/mouse/rat IgG.

Application Notes

The stated application concentrations are suggested starting points. Titration of the recombinant Rabbit IgG Fab antibody may be required due to differences in protocols and secondary/substrate sensitivity.

Immunogen

Rabbit IgG was used as the immunogen for this recombinant Rabbit IgG Fab antibody.

Storage

Store the recombinant Rabbit IgG Fab antibody at -20oC (with glycerol) or aliquot and store at -20oC (without glycerol).