

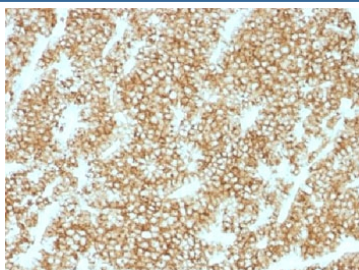
## Recombinant PTH Antibody (N-Terminal) / Rabbit Monoclonal [clone PTH/1717R] (V7272)

Catalog No.	Formulation	Size
V7272-100UG	0.2 mg/ml in 1X PBS with 0.1 mg/ml BSA (US sourced) and 0.05% sodium azide	100 ug
V7272-20UG	0.2 mg/ml in 1X PBS with 0.1 mg/ml BSA (US sourced) and 0.05% sodium azide	20 ug
V7272SAF-100UG	1 mg/ml in 1X PBS; BSA free, sodium azide free	100 ug
V7272IHC-7ML	Prediluted in 1X PBS with 0.1 mg/ml BSA (US sourced) and 0.05% sodium azide; *For IHC use only*	7 ml

Recombinant **RABBIT MONOCLONAL**

[Bulk quote request](#)

Availability	1-3 business days
Species Reactivity	Human
Format	Purified
Host	Rabbit
Clonality	Recombinant Rabbit Monoclonal
Isotype	Rabbit IgG, kappa
Clone Name	PTH/1717R
Purity	Protein A affinity chromatography
UniProt	P01270
Localization	Cytoplasmic and secreted
Applications	Immunohistochemistry (FFPE) : 0.5-1ug/ml for 30 min at RT
Limitations	This recombinant PTH antibody is available for research use only.



IHC testing of FFPE human parathyroid gland stained with recombinant PTH antibody (clone PTH/1717R). Required HIER: steam sections in 10mM citrate buffer, pH 6.0, for 10-20 min.

## Description

PTH/Parathyroid hormone is a hormone produced by the parathyroid gland that regulates the concentration of calcium and phosphorus in extracellular fluid. This hormone elevates blood  $\text{Ca}^{2+}$  levels by dissolving the salts in bone and preventing their renal excretion. It is produced in the parathyroid gland as an 84 amino acid single chain polypeptide. It can also be secreted as N-terminal truncated fragments or C-terminal fragments after intracellular degradation, as in case of hypercalcemia. Defects in this gene are a cause of familial isolated hypoparathyroidism (FIH); also called autosomal dominant hypoparathyroidism or autosomal dominant hypocalcemia. FIH is characterized by hypocalcemia and hyperphosphatemia due to inadequate secretion of parathyroid hormone. Symptoms are seizures, tetany and cramps. FIH exist both as autosomal dominant and recessive forms of hypoparathyroidism.

## Application Notes

Optimal dilution of the recombinant PTH antibody should be determined by the researcher.

1. The prediluted format is supplied in a dropper bottle and is optimized for use in IHC. After epitope retrieval step (if required), drip mAb solution onto the tissue section and incubate at RT for 30 min.

## Immunogen

A synthetic peptide from the N-terminal region of human Parathyroid hormone was used as the immunogen for the recombinant PTH antibody.

## Storage

Store the recombinant PTH antibody at 2-8°C (with azide) or aliquot and store at -20°C or colder (without azide).