

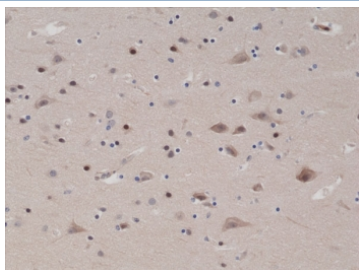
## Recombinant PTEN Antibody [clone RM265] (R20282)

Catalog No.	Formulation	Size
R20282-0.1ML	Antibody in PBS with 50% glycerol, 1% BSA and 0.09% sodium azide	100 ul

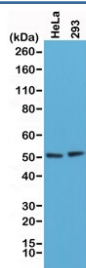
Recombinant **RABBIT MONOCLONAL**

[Bulk quote request](#)

Availability	1-3 business days
Species Reactivity	Human
Predicted Reactivity	Mouse
Format	Purified
Host	Rabbit
Clonality	Recombinant Rabbit Monoclonal
Isotype	Rabbit IgG
Clone Name	RM265
Purity	Protein A purified from animal origin-free supernatant
UniProt	P60484
Gene ID	5728
Applications	Immunohistochemistry (FFPE) : 1:1000-1:2000 (1) Western Blot : 1:1000-1:2000
Limitations	This recombinant PTEN antibody is available for research use only.



IHC testing of FFPE human brain tissue with recombinant PTEN antibody at 1:1000.



Western blot testing of human HeLa and 293 cell lysate with recombinant PTEN antibody at 1:1000. Expected molecular weight: 47~55 kDa (isoform 1), 65~70 kDa ('long' isoform).

## Description

This recombinant PTEN antibody reacts to human Phosphatidylinositol 3,4,5-trisphosphate 3-phosphatase and has dual-specificity to protein phosphatase PTEN. It may also react to mouse PTEN, as predicted by immunogen homology.

## Application Notes

The stated application concentrations are suggested starting points. Titration of the recombinant PTEN antibody may be required due to differences in protocols and secondary/substrate sensitivity.

## Immunogen

A peptide corresponding to the C-terminus of human PTEN was used as the immunogen for this recombinant PTEN antibody.

## Storage

Store the recombinant PTEN antibody at -20°C (with glycerol) or aliquot and store at -20°C (without glycerol).