

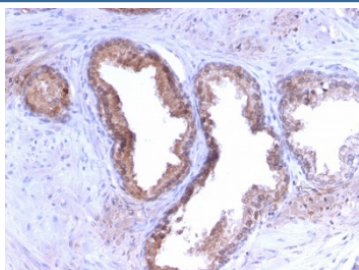
Recombinant PSA Antibody / Prostate Specific Antigen [clone KLK3/2871R] (V7293)

Catalog No.	Formulation	Size
V7293-100UG	0.2 mg/ml in 1X PBS with 0.1 mg/ml BSA (US sourced) and 0.05% sodium azide	100 ug
V7293-20UG	0.2 mg/ml in 1X PBS with 0.1 mg/ml BSA (US sourced) and 0.05% sodium azide	20 ug
V7293SAF-100UG	1 mg/ml in 1X PBS; BSA free, sodium azide free	100 ug
V7293IHC-7ML	Prediluted in 1X PBS with 0.1 mg/ml BSA (US sourced) and 0.05% sodium azide; *For IHC use only*	7 ml

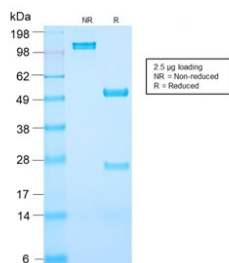
Recombinant **RABBIT MONOCLONAL**

[Bulk quote request](#)

Availability	1-3 business days
Species Reactivity	Human
Format	Purified
Clonality	Recombinant Rabbit Monoclonal
Isotype	Rabbit IgG, kappa
Clone Name	KLK3/2871R
Purity	Protein A affinity chromatography
UniProt	P07288
Localization	Cytoplasmic
Applications	Immunohistochemistry (FFPE) : 0.5-1ug/ml for 30 min at RT
Limitations	This recombinant PSA antibody is available for research use only.



IHC staining of FFPE human prostate carcinoma with PSA antibody (clone KLK3/2871R). HIER: boil tissue sections in 10mM Tris with 1mM EDTA, pH 9 for 10-20 min and allow to cool before testing.



SDS-PAGE analysis of purified, BSA-free recombinant PSA antibody (clone KLK3/2871R) as confirmation of integrity and purity.

Description

Recognizes a single protein of 33-34kDa, identified as the prostate specific antigen (PSA). This MAb is highly specific to PSA and stains prostatic secretory and ductal epithelium in both normal and neoplastic tissues. PSA is a chymotrypsin-like serine protease (kallikrein family) exclusively produced by the prostate epithelium, and abundant in seminal fluid. PSA can be detected in the sera of patients with prostatic carcinoma. It is predominantly complexed to a liver-derived serine protease inhibitor, alpha-1-antichymotrypsin (ACT). A higher proportion of serum PSA is complexed to ACT in prostate cancer than in benign prostate hyperplasia. This MAb makes an excellent pair with mAb [A67-B/E3](#) for PSA tests.

Application Notes

The optimal dilution of the recombinant PSA antibody for each application should be determined by the researcher.

1. The prediluted format is supplied in a dropper bottle and is optimized for use in IHC. After epitope retrieval step (if required), drip mAb solution onto the tissue section and incubate at RT for 30 min.

Immunogen

Recombinant human protein was used as the immunogen for this recombinant PSA antibody.

Storage

Store the recombinant PSA antibody at 2-8°C (with azide) or aliquot and store at -20°C or colder (without azide).