

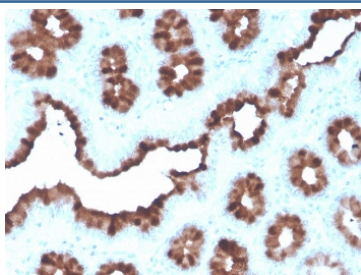
Recombinant pS2 Antibody / TFF1 [clone rTFF1/1091] (V8111)

Catalog No.	Formulation	Size
V8111-100UG	0.2 mg/ml in 1X PBS with 0.1 mg/ml BSA (US sourced) and 0.05% sodium azide	100 ug
V8111-20UG	0.2 mg/ml in 1X PBS with 0.1 mg/ml BSA (US sourced) and 0.05% sodium azide	20 ug
V8111SAF-100UG	1 mg/ml in 1X PBS; BSA free, sodium azide free	100 ug

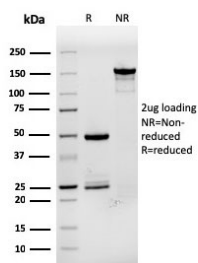
Recombinant MOUSE MONOCLONAL

[Bulk quote request](#)

Availability	1-3 business days
Species Reactivity	Human
Format	Purified
Host	Mouse
Clonality	Recombinant Mouse Monoclonal
Isotype	Mouse IgG1, kappa
Clone Name	rTFF1/1091
Purity	Protein G affinity chromatography
UniProt	P04155
Localization	Cytoplasmic
Applications	Immunohistochemistry (FFPE) : 1-2ug/ml (not suitable for frozen tissues)
Limitations	This recombinant pS2 antibody is available for research use only.



IHC staining of FFPE human breast carcinoma with recombinant pS2 antibody (clone rTFF1/1091). HIER: boil tissue sections in pH 9 10mM Tris with 1mM EDTA for 20 min and allow to cool before testing.



SDS-PAGE analysis of purified, BSA-free recombinant pS2 antibody (clone rTFF1/1091) as confirmation of integrity and purity.

Description

It recognizes a polypeptide of 6.5kDa, identified as pS2 estrogen-regulated protein. Its epitope is located in the c-terminus of human pS2 protein. pS2 is a trefoil peptide. Trefoil peptides are protease resistant molecules secreted throughout the gut that play a role in mucosal healing. These peptides contain three intra-chain disulfide bonds, forming the trefoil motif, or P-domain. pS2 is known to form dimers and this dimerization is thought to play a role in its protective and healing properties. About 60% of breast carcinomas are positive for pS2. Staining is cytoplasmic, often with localization to the Golgi apparatus. pS2 is shown to be localized in normal stomach mucosa, gastric fluid, goblet cells in the colon and small intestine, and in ulcerations of the gastrointestinal tract. Several studies have shown that pS2 is primarily expressed in estrogen receptor-positive breast tumors and it may define a subset of estrogen-dependent tumors that displays an increased likelihood of response to endocrine therapy.

Application Notes

Optimal dilution of the recombinant pS2 antibody should be determined by the researcher.

Immunogen

A recombinant full-length human protein was used as the immunogen for this recombinant pS2 antibody. Its epitope is located in the c-terminal region of human pS2 protein.

Storage

Store the recombinant pS2 antibody at 2-8oC (with azide) or aliquot and store at -20oC or colder (without azide).