

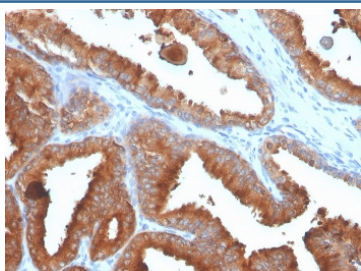
## Recombinant Prostate Specific Antigen Antibody / PSA [clone rKLK3/4753] (V8699)

Catalog No.	Formulation	Size
V8699-100UG	0.2 mg/ml in 1X PBS with 0.1 mg/ml BSA (US sourced) and 0.05% sodium azide	100 ug
V8699-20UG	0.2 mg/ml in 1X PBS with 0.1 mg/ml BSA (US sourced) and 0.05% sodium azide	20 ug
V8699SAF-100UG	1 mg/ml in 1X PBS; BSA free, sodium azide free	100 ug

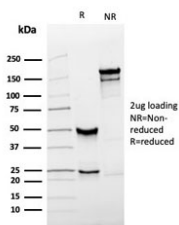
### Recombinant MOUSE MONOCLONAL

[Bulk quote request](#)

Availability	1-3 business days
Species Reactivity	Human
Format	Purified
Host	Mouse
Clonality	Recombinant Mouse Monoclonal
Isotype	Mouse IgG2a, kappa
Clone Name	rKLK3/4753
Purity	Protein G affinity chromatography
UniProt	P07288
Localization	Cytoplasmic
Applications	Immunohistochemistry (FFPE) : 1-2ug/ml for 30 minutes at RT
Limitations	This recombinant Prostate Specific Antigen antibody is available for research use only.



IHC staining of FFPE human prostate carcinoma with recombinant Prostate Specific Antigen antibody (clone rKLK3/4753). HIER: boil tissue sections in pH 9 10mM Tris with 1mM EDTA for 20 min and allow to cool before testing.



SDS-PAGE analysis of purified, BSA-free recombinant Prostate Specific Antigen antibody (clone rKLK3/4753) as confirmation of integrity and purity.

## Description

Recognizes a single protein of 33-34kDa, identified as the prostate specific antigen (PSA). This MAb is highly specific to PSA and stains prostatic secretory and ductal epithelium in both normal and neoplastic tissues. PSA is a chymotrypsin-like serine protease (kallikrein family) exclusively produced by the prostate epithelium, and abundant in seminal fluid. PSA can be detected in the sera of patients with prostatic carcinoma. It is predominantly complexed to a liver-derived serine protease inhibitor, alpha-1-antichymotrypsin (ACT). A higher proportion of serum PSA is complexed to ACT in prostate cancer than in benign prostate hyperplasia. This mAb makes an excellent pair with clone 1A7G6B6 for PSA tests.

## Application Notes

Optimal dilution of the recombinant Prostate Specific Antigen antibody should be determined by the researcher.

## Immunogen

Recombinant full-length human KLK3/PSA protein was used as the immunogen for the recombinant Prostate Specific Antigen antibody.

## Storage

Store the recombinant Prostate Specific Antigen antibody at 2-8oC (with azide) or aliquot and store at -20oC or colder (without azide).