

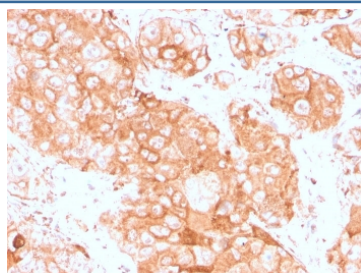
Recombinant Prolactin Receptor Antibody / PRLR [clone PRLR/3785R] (V8037)

Catalog No.	Formulation	Size
V8037-100UG	0.2 mg/ml in 1X PBS with 0.1 mg/ml BSA (US sourced) and 0.05% sodium azide	100 ug
V8037-20UG	0.2 mg/ml in 1X PBS with 0.1 mg/ml BSA (US sourced) and 0.05% sodium azide	20 ug
V8037SAF-100UG	1 mg/ml in 1X PBS; BSA free, sodium azide free	100 ug

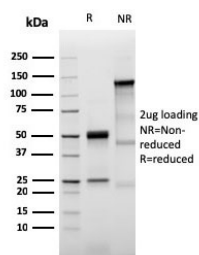
Recombinant **RABBIT MONOCLONAL**

[Bulk quote request](#)

Availability	1-3 business days
Species Reactivity	Human
Format	Purified
Clonality	Recombinant Rabbit Monoclonal
Isotype	Rabbit IgG, kappa
Clone Name	PRLR/3785R
Purity	Protein A affinity chromatography
UniProt	P16471
Localization	Cell surface, cytoplasmic
Applications	Immunohistochemistry (FFPE) : 1-2ug/ml
Limitations	This recombinant Prolactin Receptor antibody is available for research use only.



IHC staining of FFPE human testicular carcinoma with recombinant Prolactin Receptor antibody (clone PRLR/3785R). HIER: boil tissue sections in pH 9 10mM Tris with 1mM EDTA for 20 min and allow to cool before testing.



SDS-PAGE analysis of purified, BSA-free recombinant Prolactin Receptor antibody (clone PRLR/3785R) as confirmation of integrity and purity.

Description

It recognizes a protein of 70kDa, identified as prolactin receptor. Prolactin is a pituitary hormone involved in the stimulation of milk production, salt and water regulation, growth, development and reproduction. The initial step in its action is the binding to a specific membrane receptor (prolactin receptor), which belongs to the superfamily of class 1 cytokine receptors. The function of the prolactin receptor is mediated, at least in part, by two families of signaling molecules: Janus kinases and signal transducers and activators of transcription.

Application Notes

Optimal dilution of the recombinant Prolactin Receptor antibody should be determined by the researcher.

Immunogen

A recombinant full-length human protein was used as the immunogen for this recombinant Prolactin Receptor antibody.

Storage

Store the recombinant Prolactin Receptor antibody at 2-8oC (with azide) or aliquot and store at -20oC or colder (without azide).