

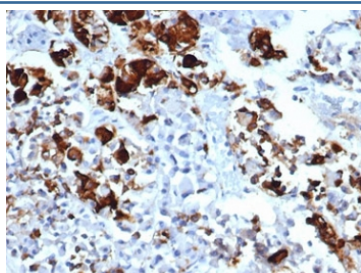
Recombinant PRL Antibody / Prolactin [clone rPRL/4909] (V9304)

| Catalog No. | Formulation | Size |
|----------------|---|--------|
| V9304-100UG | 0.2 mg/ml in 1X PBS with 0.1 mg/ml BSA (US sourced), 0.05% sodium azide | 100 ug |
| V9304-20UG | 0.2 mg/ml in 1X PBS with 0.1 mg/ml BSA (US sourced), 0.05% sodium azide | 20 ug |
| V9304SAF-100UG | 1 mg/ml in 1X PBS; BSA free, sodium azide free | 100 ug |

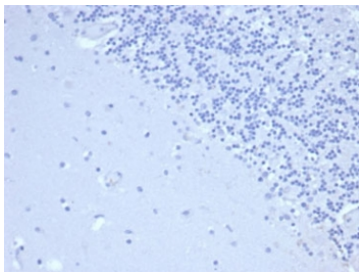
Recombinant **MOUSE MONOCLONAL**

[Bulk quote request](#)

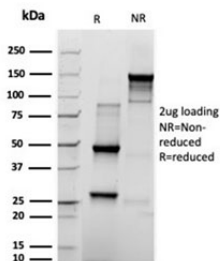
| | |
|--------------------|---|
| Availability | 1-3 business days |
| Species Reactivity | Human |
| Format | Purified |
| Host | Mouse |
| Clonality | Recombinant Mouse Monoclonal |
| Isotype | Mouse IgG1, kappa |
| Clone Name | rPRL/4909 |
| Purity | Protein A/G affinity |
| UniProt | IDP01236 |
| Localization | Secreted |
| Applications | Immunohistochemistry (FFPE) : 1-2ug/ml |
| Limitations | This recombinant PRL antibody is available for research use only. |



IHC staining of FFPE human pituitary tissue with recombinant PRL antibody (clone rPRL/4909). HIER: boil tissue sections in pH 9 10mM Tris with 1mM EDTA for 20 min and allow to cool before testing.



Negative control: IHC staining of FFPE human brain tissue using recombinant PRL antibody (clone rPRL/4909) at 2ug/ml in PBS for 30min RT. HIER: boil tissue sections in pH 9 10mM Tris with 1mM EDTA for 20 min and allow to cool before testing.



SDS-PAGE analysis of purified, BSA-free recombinant PRL antibody (rPRL/4909) as confirmation of integrity and purity.

Description

Prolactin acts primarily on the mammary gland by promoting lactation. [UniProt]

Application Notes

Optimal dilution of the recombinant PRL antibody should be determined by the researcher.

Immunogen

A portion of amino acids 63-201 was used as the immunogen for the recombinant PRL antibody.

Storage

Aliquot the recombinant PRL antibody and store frozen at -20oC or colder. Avoid repeated freeze-thaw cycles.