

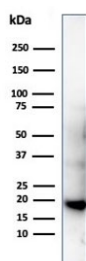
## Recombinant Poly His Antibody / His Tag [clone 6HIS/6402R] (V9221)

Catalog No.	Formulation	Size
V9221-100UG	0.2 mg/ml in 1X PBS with 0.1 mg/ml BSA (US sourced), 0.05% sodium azide	100 ug
V9221-20UG	0.2 mg/ml in 1X PBS with 0.1 mg/ml BSA (US sourced), 0.05% sodium azide	20 ug
V9221SAF-100UG	1 mg/ml in 1X PBS; BSA free, sodium azide free	100 ug

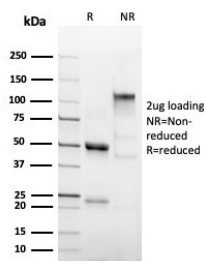
Recombinant **RABBIT MONOCLONAL**

[Bulk quote request](#)

<b>Availability</b>	1-3 business days
<b>Species Reactivity</b>	Species independent
<b>Format</b>	Purified
<b>Clonality</b>	Recombinant Rabbit Monoclonal
<b>Isotype</b>	Rabbit IgG
<b>Clone Name</b>	6HIS/6402R
<b>Purity</b>	Protein A/G affinity
<b>UniProt</b>	Not Applicable
<b>Applications</b>	Western Blot : 1-2ug/ml Flow Cytometry : 1-2ug/million cells Immunofluorescence : 1-2ug/ml
<b>Limitations</b>	This recombinant Poly His antibody is available for research use only.



Western blot testing of His-tagged protein using recombinant Poly His antibody (clone 6HIS/6402R).



SDS-PAGE analysis of purified, BSA-free recombinant Poly His antibody (clone 6HIS/6402R) as confirmation of integrity and purity.

## Description

It recognizes both the free and protein-conjugated (either soluble or cell bound) form of hexa-histidine. This MAb is highly specific to hexa-histidine and shows no cross-reaction with other structurally related compounds. It has a very high affinity for hexa-histidine and is excellent for use in various techniques. His-Tag Antibody detects recombinant proteins containing the 6xHis epitope tag. The antibody recognizes the 6xHis-tag fused to either the amino or carboxy terminus of targeted proteins in transfected cells. Epitope tags are useful for the labeling and detection of proteins using immunoblotting, immunoprecipitation, and immunostaining techniques. Because of their small size, they are unlikely to affect the tagged protein's biochemical properties. A variety of plasmids contain DNA that encodes an amino-terminal tag consisting of six histidine (6xHis) residues followed by an extended multiple cloning site. The 6xHis tag on the expressed recombinant proteins allows for efficient coupling to Ni<sup>2+</sup> affinity resins and purification by single step chromatography. As is the case with other protein tag systems, this polyhistidine tag can often be cleaved at sites recognized by proteases such as thrombin and enterokinases to isolate the protein of interest.

## Application Notes

Optimal dilution of the recombinant Poly His antibody should be determined by the researcher.

## Immunogen

Hexa-histidine tagged human protein was used as the immunogen for the recombinant Poly His antibody.

## Storage

Aliquot the recombinant Poly His antibody and store frozen at -20°C or colder. Avoid repeated freeze-thaw cycles.