

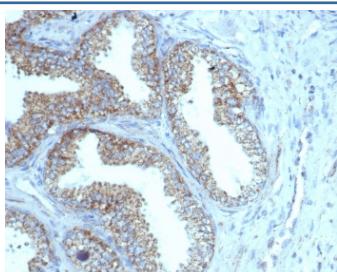
## Recombinant PMEPA1 Antibody / TMEPAI [clone rPMEPA1/6422] (V9286)

Catalog No.	Formulation	Size
V9286-100UG	0.2 mg/ml in 1X PBS with 0.1 mg/ml BSA (US sourced), 0.05% sodium azide	100 ug
V9286-20UG	0.2 mg/ml in 1X PBS with 0.1 mg/ml BSA (US sourced), 0.05% sodium azide	20 ug
V9286SAF-100UG	1 mg/ml in 1X PBS; BSA free, sodium azide free	100 ug

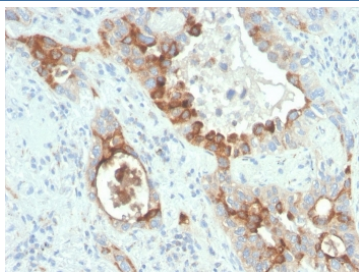
Recombinant **MOUSE MONOCLONAL**

[Bulk quote request](#)

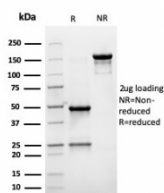
<b>Availability</b>	1-3 business days
<b>Species Reactivity</b>	Human
<b>Format</b>	Purified
<b>Clonality</b>	Recombinant Mouse Monoclonal
<b>Isotype</b>	Mouse IgG1, kappa
<b>Clone Name</b>	rPMEPA1/6422
<b>Purity</b>	Protein A/G affinity
<b>UniProt</b>	Q96W9
<b>Localization</b>	Cell surface, Cytoplasm
<b>Applications</b>	Immunohistochemistry (FFPE) : 1-2ug/ml
<b>Limitations</b>	This recombinant PMEPA1 antibody is available for research use only.



IHC staining of FFPE human prostate tissue with recombinant PMEPA1 antibody (clone rPMEPA1/6422). HIER: boil tissue sections in pH 9 10mM Tris with 1mM EDTA for 20 min and allow to cool before testing.



IHC staining of FFPE human colon carcinoma tissue with recombinant PMEPA1 (clone rPMEPA1/6422). HIER: boil tissue sections in pH 9 10mM Tris with 1mM EDTA for 20 min and allow to cool before testing.



SDS-PAGE analysis of purified, BSA-free recombinant PMEPA1 antibody (clone rPMEPA1/6422) as confirmation of integrity and purity.

## Description

PMEPA1 (prostate transmembrane protein, androgen induced 1) is a 287 amino acid single-pass membrane protein that contains WW-binding motifs and localizes to the cell membrane. Expressed at high levels in prostate, kidney and ovary, PMEPA1 interacts with NEDD4 and may play a role in regulating AR (androgen receptor) levels, specifically in prostate cells. Down regulation of PMEPA1 is observed in prostate tumors, suggesting that PMEPA1 may exhibit activity as a tumor suppressor. Overexpression of this protein may play a role in multiple types of cancer.

## Application Notes

Optimal dilution of the recombinant PMEPA1 antibody should be determined by the researcher.

## Immunogen

Recombinant full-length human PMEPA1/TMEPAI protein was used as the immunogen for the recombinant PMEPA1 antibody.

## Storage

Aliquot the recombinant PMEPA1 antibody and store frozen at -20°C or colder. Avoid repeated freeze-thaw cycles.