

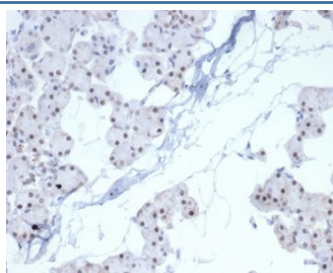
Recombinant PHOX2B Antibody [clone PHOX2B/7161R] (V4057)

Catalog No.	Formulation	Size
V4057-100UG	0.2 mg/ml in 1X PBS with 0.1 mg/ml BSA (US sourced), 0.05% sodium azide	100 ug
V4057-20UG	0.2 mg/ml in 1X PBS with 0.1 mg/ml BSA (US sourced), 0.05% sodium azide	20 ug
V4057SAF-100UG	1 mg/ml in 1X PBS; BSA free, sodium azide free	100 ug

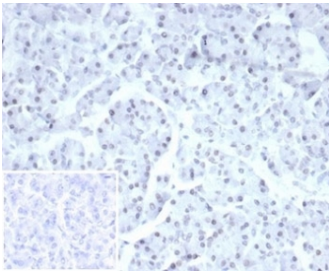
Recombinant **RABBIT MONOCLONAL**

[Bulk quote request](#)

Availability	1-3 business days
Species Reactivity	Human
Format	Purified
Host	Rabbit
Clonality	Recombinant Rabbit Monoclonal
Isotype	Rabbit IgG, kappa
Clone Name	PHOX2B/7161R
Purity	Protein A/G affinity
UniProt	Q99453
Localization	Nucleus
Applications	Immunohistochemistry (FFPE) : 1-2ug/ml
Limitations	This recombinant PHOX2B antibody is available for research use only.



IHC staining of FFPE human renal cell carcinoma with recombinant PHOX2B antibody (clone PHOX2B/7161R). HIER: boil tissue sections in pH 9 10mM Tris with 1mM EDTA for 20 min and allow to cool before testing.



IHC staining of FFPE human pancreas with recombinant PHOX2B antibody (clone PHOX2B/7161R). Negative control inset: PBS used instead of primary antibody to control for secondary Ab binding.

Description

Paired homeobox protein 2B (PHOX2B) is a transcription factor located on chromosome 4p13, which is essential for the formation of autonomic ganglia in the autonomic nervous system. PHOX2B is expressed in neuroblastoma, brain and adrenal glands. PHOX2B deficiency can lead to susceptibility to congenital central hypoventilation syndrome (CCHS) and neuroblastoma type 2 (NBLST2).

Application Notes

Optimal dilution of the recombinant PHOX2B antibody should be determined by the researcher.

Immunogen

A human PHOX2B partial protein was used as the immunogen for the recombinant PHOX2B antibody.

Storage

Aliquot the recombinant PHOX2B antibody and store frozen at -20°C or colder. Avoid repeated freeze-thaw cycles.