

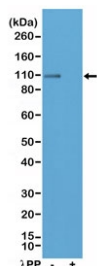
Recombinant phospho-GluR1 Antibody (pSer845) [clone RM296] (R20317)

Catalog No.	Formulation	Size
R20317-0.1ML	Antibody in PBS with 50% glycerol, 1% BSA and 0.09% sodium azide	100 ul

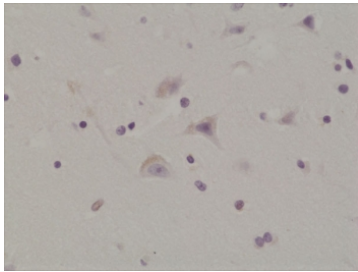
Recombinant **RABBIT MONOCLONAL**

[Bulk quote request](#)

Availability	1-3 business days
Species Reactivity	Human, Mouse
Predicted Reactivity	Rat
Format	Purified
Host	Rabbit
Clonality	Recombinant Rabbit Monoclonal
Isotype	Rabbit IgG
Clone Name	RM296
Purity	Protein A purified from animal origin-free supernatant
UniProt	P42261
Localization	Cytoplasmic
Applications	Immunohistochemistry (FFPE) : 1:100-1:200 Western Blot : 1:100-1:200
Limitations	This recombinant phospho-GluR1 antibody is available for research use only.



Western blot testing of lysate from mouse brain tissue, untreated (-) or dephosphorylated (+) with Lambda Protein Phosphatase (λPP), with recombinant phospho-GluR1 antibody at 1:200 dilution. Predicted molecular weight ~102 kDa.



IHC testing of formalin fixed and paraffin embedded human brain tissue with recombinant phospho-GluR1 antibody at 1:200 dilution. HIER: steam section in pH6 citrate buffer for 20 min and allow to cool prior to staining.

Description

This antibody reacts to human Glutamate Receptor 1 (GluR1), also called AMPA Receptor, only when phosphorylated at Ser845. There is no cross-reactivity to GluR1 that is not phosphorylated at Ser845. This antibody may also react to mouse or rat phospho-GluR1 (Ser845) as predicted by immunogen homology.

Application Notes

The stated application concentrations are suggested starting points. Titration of the recombinant phospho-GluR1 antibody may be required due to differences in protocols and secondary/substrate sensitivity.

Immunogen

A peptide corresponding to the amino acids surrounding phosphorylated serine 845 from the human protein was used as the immunogen for the recombinant phospho-GluR1 antibody.

Storage

Store the recombinant phospho-GluR1 antibody at -20°C.